

For Research Use Only

ATP6V1B2 Monoclonal antibody

Catalog Number: 68441-1-Ig

Featured Product



Basic Information

Catalog Number:

68441-1-Ig

Size:

1000 µg/ml

Source:

Mouse

Isotype:

IgG1

Immunogen Catalog Number:

AG7265

GenBank Accession Number:

BC003100

GeneID (NCBI):

526

UNIPROT ID:

P21281

Full Name:

ATPase, H⁺ transporting, lysosomal
56/58kDa, V1 subunit B2

Calculated MW:

57 kDa

Observed MW:

56-58 kDa

Purification Method:

Protein G purification

CloneNo.:

3C11A9

Recommended Dilutions:

WB 1:5000-1:40000

IP 0.5-4.0 µg for 1.0-3.0 mg of total
protein lysate

Applications

Tested Applications:

WB, FC (Intra), IP, ELISA

Species Specificity:

human, mouse, rat, pig, rabbit

Positive Controls:

WB : HeLa cells, A549 cells, Jurkat cells, K-562 cells,
HSC-T6 cells, NIH/3T3 cells, pig brain tissue, rabbit
brain tissue, mouse brain tissue

IP : HeLa cells,

Background Information

ATP6V1B2(V-type proton ATPase subunit B, brain isoform) is also named as ATP6B2, VPP3, HO57. It belongs to the ATPase alpha/beta chains family. V-ATPase is an heteromultimeric enzyme composed of a peripheral catalytic V1 complex attached to an integral membrane V0 proton pore complex. The quasi-ubiquitous ATP6V1B2 is one of 2 isoforms of ATP6V1 and is expressed in most cell types, where it plays a major role in organelle acidification(PMID:18667600).

Storage

Storage:

Store at -20°C. Stable for one year after shipment.

Storage Buffer:

PBS with 0.02% sodium azide and 50% glycerol pH 7.3.

Aliquoting is unnecessary for -20°C storage

For technical support and original validation data for this product please contact:

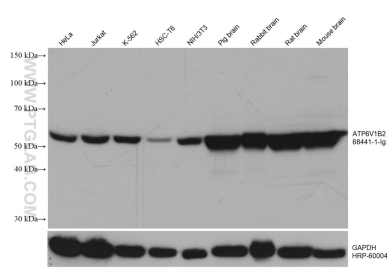
T: 4006900926

E: Proteintech-CN@ptglab.com

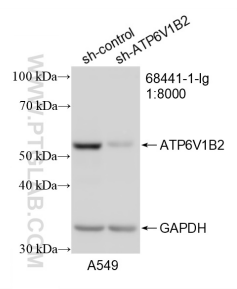
W: ptgcn.com

This product is exclusively available under Proteintech Group brand and is not available to purchase from any other manufacturer.

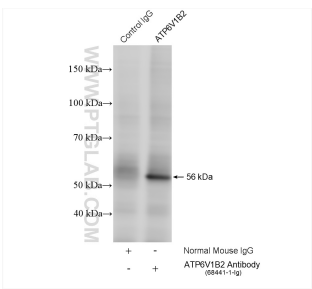
Selected Validation Data



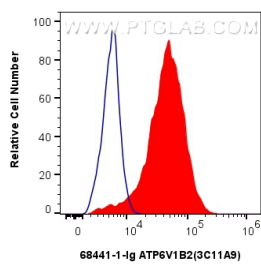
Various lysates were subjected to SDS PAGE followed by western blot with 68441-1-Ig (ATP6V1B2 antibody) at dilution of 1:20000 incubated at room temperature for 1.5 hours. The membrane was stripped and reblotted with HRP-conjugated GAPDH Monoclonal antibody (HRP-60004) as loading control.



WB result of ATP6V1B2 antibody (68441-1-Ig; 1:8000; incubated at room temperature for 1.5 hours) with sh-Control and sh-ATP6V1B2 transfected A549 cells.



IP result of anti-ATP6V1B2 (IP:68441-1-Ig, 4ug; Detection:68441-1-Ig 1:4000) with HeLa cells lysate 2000 ug.



1x10⁶ HeLa cells were intracellularly stained with 0.8 ug ATP6V1B2 Monoclonal antibody (68441-1-Ig, Clone:3C11A9) and CoraLite®488-Conjugated AffiniPure Goat Anti-Mouse IgG(H+L) (SA00013-1) (red), or 0.8 ug Mouse IgG1 isotype control Mouse McAb (66360-1-Ig, Clone: 1F8D3) (blue). Cells were fixed with 4% PFA and permeabilized with Flow Cytometry Perm Buffer (PF00011-C).