

BHLHE40 Monoclonal antibody

Catalog Number: 68435-1-Ig

Basic Information

Catalog Number:

68435-1-Ig

Size:

1000 µg/ml

Source:

Mouse

Isotype:

IgG2a

Immunogen Catalog Number:

AG12236

GenBank Accession Number:

BC082238

GeneID (NCBI):

8553

UNIPROT ID:

O14503

Full Name:

basic helix-loop-helix family,
member e40

Calculated MW:

412 aa, 46 kDa

Observed MW:

46-50 kDa

Purification Method:

Protein A purification

CloneNo.:

1A3E1

Recommended Dilutions:

WB 1:5000-1:50000

Applications

Tested Applications:

WB, ELISA

Species Specificity:

Human

Positive Controls:

WB : Calu-3 cells, A549 cells, HCT 116 cells, MDA-MB-468 cells, Saos-2 cells, HeLa cells, PC-3 cells, K-562 cells

Background Information

BHLHE40 (Basic Helix-Loop-Helix Family Member E40), also known as BHLHB2, STRA13, DEC1, or SHARP2, is a member of the basic helix-loop-helix (bHLH) protein family, a large superfamily of transcriptional regulators expressed in many organisms. BHLHE40 is known to regulate a wide variety of essential cellular processes, including cell cycle, cellular proliferation, programmed cell death, cellular development and differentiation, as well as circadian rhythms (PMID: 34551158). It is reported that BHLHE40 is overexpressed in gastric, breast, and brain tumors; and downregulated in colorectal, esophageal, pancreatic and lung cancer (PMID: 32577154).

Storage

Storage:

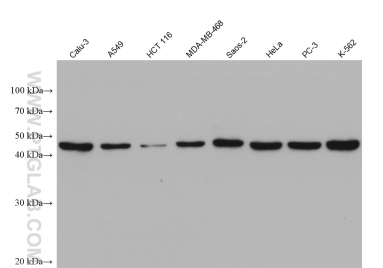
Store at -20°C. Stable for one year after shipment.

Storage Buffer:

PBS with 0.02% sodium azide and 50% glycerol pH 7.3.

Aliquoting is unnecessary for -20°C storage

Selected Validation Data



Various lysates were subjected to SDS PAGE followed by western blot with 68435-1-Ig (BHLHE40 antibody) at dilution of 1:10000 incubated at room temperature for 1.5 hours.