

# Centrin 1 Monoclonal antibody

Catalog Number: 68433-1-Ig

## Basic Information

**Catalog Number:**

68433-1-Ig

**Size:**

1000 µg/ml

**Source:**

Mouse

**Isotype:**

IgG2b

**Immunogen Catalog Number:**

AG3529

**GenBank Accession Number:**

BC029515

**GeneID (NCBI):**

1068

**UNIPROT ID:**

Q12798

**Full Name:**

centrin, EF-hand protein, 1

**Calculated MW:**

172 aa, 20 kDa

**Observed MW:**

20 kDa

**Purification Method:**

Protein A purification

**CloneNo.:**

1G8D10

**Recommended Dilutions:**

IF/ICC 1:250-1:1000

## Applications

**Tested Applications:**

IF/ICC, ELISA

**Species Specificity:**

Human

**Positive Controls:**

IF/ICC : hTERT-RPE1 cells, ARPE-19 cells

## Background Information

EF-hand type Ca<sup>2+</sup>-binding proteins consists of several family members, including Centrin-1, Centrin-2 and Centrin-3. The Centrin proteins are ubiquitously expressed cytoskeletal components that show increased expression during cell differentiation. Centrin-1 plays important roles in the determination of centrosome position and segregation, and in the process of microtubule severing. Centrin-1 is localized to the centrosome of interphase cells, and redistributes to the region of the spindle poles during mitosis, reflecting the dynamic behavior of the centrosome during the cell cycle.

## Storage

**Storage:**

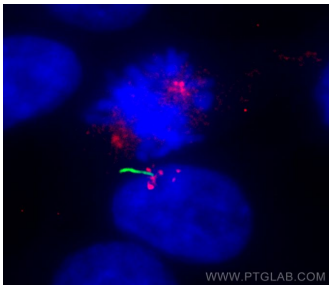
Store at -20°C. Stable for one year after shipment.

**Storage Buffer:**

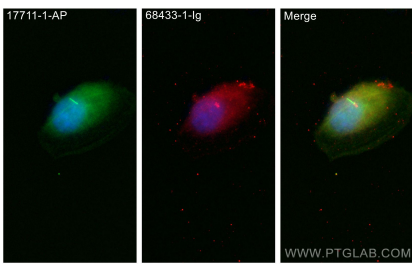
PBS with 0.02% sodium azide and 50% glycerol pH 7.3.

Aliquoting is unnecessary for -20°C storage

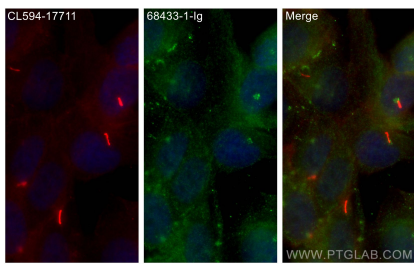
Selected Validation Data



Immunofluorescent analysis of (4% PFA) fixed hTERT-RPE1 cells using CETN1 antibody (68433-1-Ig, Clone: 1G8D10 ) at dilution of 1:500 and CoraLite®488-Conjugated AffiniPure Goat Anti-Mouse IgG(H+L).



Immunofluorescent analysis of (4% PFA) fixed ARPE-19 cells using CETN1 antibody (68433-1-Ig, Clone: 1G8D10 ) at dilution of 1:500 and CoraLite®488-Conjugated AffiniPure Goat Anti-Mouse IgG(H+L).



Immunofluorescent analysis of (4% PFA) fixed hTERT-RPE1 cells using CETN1 antibody (68433-1-Ig, Clone: 1G8D10 ) at dilution of 1:300 and CoraLite®488-Conjugated AffiniPure Goat Anti-Mouse IgG(H+L).