

# ATP6V1H Monoclonal antibody

Catalog Number: 68425-1-Ig

## Basic Information

**Catalog Number:**

68425-1-Ig

**Size:**

1000 µg/ml

**Source:**

Mouse

**Isotype:**

IgG1

**Immunogen Catalog Number:**

AG10130

**GenBank Accession Number:**

BC025275

**GeneID (NCBI):**

51606

**UNIPROT ID:**

Q9UI12

**Full Name:**

ATPase, H<sup>+</sup> transporting, lysosomal  
50/57kDa, V1 subunit H

**Calculated MW:**

483 aa, 56 kDa

**Observed MW:**

50 kDa

**Purification Method:**

Protein G purification

**CloneNo.:**

3G7B5

**Recommended Dilutions:**

WB 1:5000-1:50000

IF/ICC 1:200-1:800

## Applications

**Tested Applications:**

IF/ICC, WB, ELISA

**Species Specificity:**

Human, mouse, rat, rabbit, pig

**Positive Controls:**

**WB** : U2OS cells, pig brain tissue, LNCaP cells, HeLa cells, Jurkat cells, K-562 cells, rabbit brain tissue, rat brain tissue, mouse brain tissue

**IF/ICC** : HepG2 cells,

## Background Information

The vacuolar-type H<sup>(+)</sup>-ATPase (V-ATPase) is responsible for the acidification of endosomes, lysosomes, and other intracellular organelles. It is also involved in hydrogen ion transport across the plasma membrane into the extracellular space. The V-ATPase is a multisubunit complex with cytosolic and transmembrane domains.

## Storage

**Storage:**

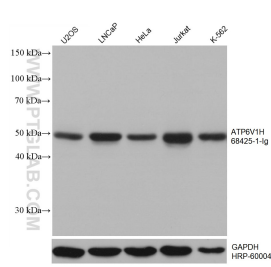
Store at -20°C. Stable for one year after shipment.

**Storage Buffer:**

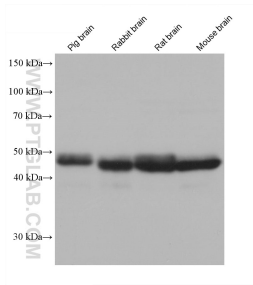
PBS with 0.02% sodium azide and 50% glycerol pH 7.3.

Aliquoting is unnecessary for -20°C storage

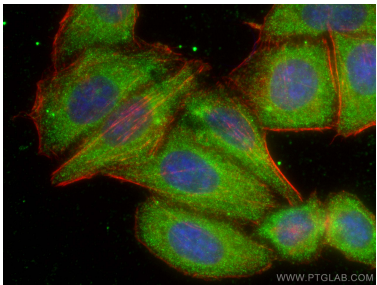
## Selected Validation Data



Various lysates were subjected to SDS PAGE followed by western blot with 68425-1-Ig (ATP6V1H antibody) at dilution of 1:10000 incubated at room temperature for 1.5 hours. The membrane was stripped and reblotted with HRP-conjugated GAPDH Monoclonal antibody (HRP-60004) as loading control.



Various lysates were subjected to SDS PAGE followed by western blot with 68425-1-Ig (ATP6V1H antibody) at dilution of 1:10000 incubated at room temperature for 1.5 hours.



Immunofluorescent analysis of (-20°C Ethanol) fixed HepG2 cells using ATP6V1H antibody (68425-1-Ig, Clone: 3G7B5 ) at dilution of 1:400 and CoraLite®488-Conjugated AffiniPure Goat Anti-Mouse IgG(H+L), CL594-Phalloidin (red).