

For Research Use Only

SSSCA1 Monoclonal antibody, PBS Only (Detector)

Catalog Number: 68423-4-PBS



Basic Information

Catalog Number:

68423-4-PBS

Source:

Mouse

Isotype:

IgG1

Immunogen Catalog Number:

AG16783

GenBank Accession Number:

BC014791

GeneID (NCBI):

10534

UNIPROT ID:

O60232

Full Name:

Sjogren syndrome/scleroderma autoantigen 1

Calculated MW:

199 aa, 21 kDa

Purification Method:

Protein G purification

CloneNo.:

1H7F4

Applications

Tested Applications:

Cytometric bead array, Indirect ELISA

Species Specificity:

human

Background Information

Storage

Storage:

Store at -80°C.

The product is shipped with ice packs. Upon receipt, store it immediately at -80°C

Storage Buffer:

PBS only, pH7.3

For technical support and original validation data for this product please contact:

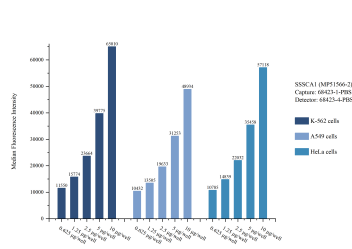
T: 4006900926

E: Proteintech-CN@ptglab.com

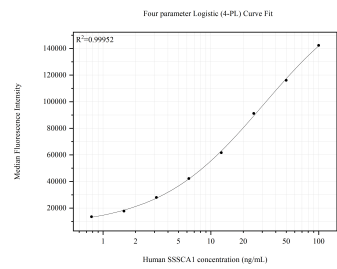
W: ptgcn.com

This product is exclusively available under Proteintech Group brand and is not available to purchase from any other manufacturer.

Selected Validation Data



Cytometric bead array sample test of MP51566-2, SSSCA1 Monoclonal Matched Antibody Pair, PBS Only. Capture antibody: 68423-1-PBS. Detection antibody: 68423-4-PBS.



Cytometric bead array standard curve of MP51566-2, SSSCA1 Monoclonal Matched Antibody Pair, PBS Only. Capture antibody: 68423-1-PBS. Detection antibody: 68423-4-PBS. Standard:Ag16783. Range: 0.781-100 ng/mL.