

SSSCA1 Monoclonal antibody

Catalog Number: 68423-1-Ig

Basic Information

Catalog Number:

68423-1-Ig

Size:

1000 µg/ml

Source:

Mouse

Isotype:

IgG1

Immunogen Catalog Number:

AG16783

GenBank Accession Number:

BC014791

GeneID (NCBI):

10534

UNIPROT ID:

O60232

Full Name:

Sjogren syndrome/scleroderma
autoantigen 1

Calculated MW:

199 aa, 21 kDa

Observed MW:

23 kDa

Purification Method:

Protein G purification

CloneNo.:

1D2E8

Recommended Dilutions:

WB 1:2000-1:10000

IF/ICC 1:200-1:800

Applications

Tested Applications:

IF/ICC, WB, ELISA

Species Specificity:

Human, mouse, rat

Positive Controls:

WB : A549 cells, LNCaP cells, MCF-7 cells, HeLa cells,
HEK-293 cells, Jurkat cells, K-562 cells, HSC-T6 cells,
NIH/3T3 cells

IF/ICC : HeLa cells,

Background Information

SSSCA1, also named as Autoantigen p27, is centromere-associated protein. It may induce anti-centromere antibodies. SSSCA1 plays a role in mitosis. It's involved in Sjogren syndrome/scleroderma. The calculated MW of SSSCA1 is 21.5 kDa (native form), with modification the MW is about 23-27 kDa.

Storage

Storage:

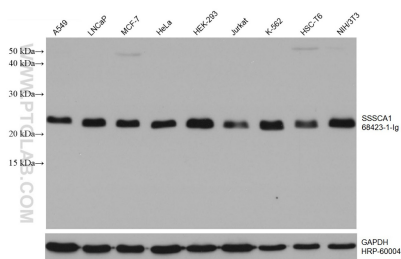
Store at -20°C. Stable for one year after shipment.

Storage Buffer:

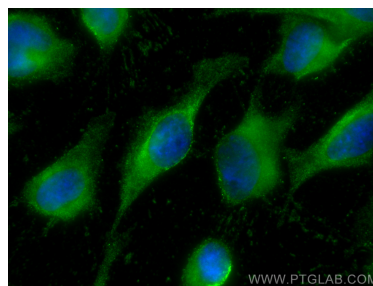
PBS with 0.02% sodium azide and 50% glycerol pH 7.3.

Aliquoting is unnecessary for -20°C storage

Selected Validation Data



Various lysates were subjected to SDS PAGE followed by western blot with 68423-1-Ig (SSSCA1 antibody) at dilution of 1:5000 incubated at room temperature for 1.5 hours. The membrane was stripped and reblotted with HRP-conjugated GAPDH Monoclonal antibody (HRP-60004) as loading control.



Immunofluorescent analysis of (-20°C Methanol) fixed HeLa cells using SSSCA1 antibody (68423-1-Ig, Clone: 1D2E8) at dilution of 1:400 and CoraLite®488-Conjugated AffiniPure Goat Anti-Mouse IgG(H+L).