

For Research Use Only

# MRPL38 Monoclonal antibody

Catalog Number: 68418-1-Ig



## Basic Information

Catalog Number:

68418-1-Ig

Size:

1000 µg/ml

Source:

Mouse

Isotype:

IgG1

Immunogen Catalog Number:

AG8927

GenBank Accession Number:

BC013311

GeneID (NCBI):

64978

UNIPROT ID:

Q96DV4

Full Name:

mitochondrial ribosomal protein L38

Calculated MW:

346 aa, 41 kDa

Observed MW:

37-45 kDa

Purification Method:

Protein G purification

CloneNo.:

1D11A1

Recommended Dilutions:

WB 1:2000-1:10000

IP 0.5-4.0 µg for 1.0-3.0 mg of total protein lysate

## Applications

Tested Applications:

IP, WB, ELISA

Species Specificity:

Human, pig

Positive Controls:

WB : A549 cells, pig liver tissue, LNCaP cells, Jurkat cells, K-562 cells

IP : A549 cells,

## Background Information

### Storage

Storage:

Store at -20°C. Stable for one year after shipment.

Storage Buffer:

PBS with 0.02% sodium azide and 50% glycerol pH 7.3.

Aliquoting is unnecessary for -20°C storage

For technical support and original validation data for this product please contact:

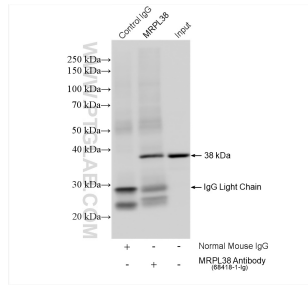
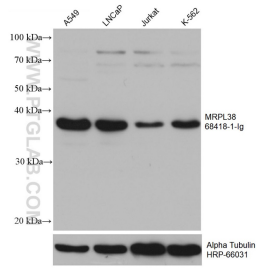
T: 4006900926

E: [Proteintech-CN@ptglab.com](mailto:Proteintech-CN@ptglab.com)

W: [ptgcn.com](http://ptgcn.com)

This product is exclusively available under Proteintech Group brand and is not available to purchase from any other manufacturer.

## Selected Validation Data



Various lysates were subjected to SDS PAGE followed by western blot with 68418-1-Ig (MRPL38 antibody) at dilution of 1:5000 incubated at room temperature for 1.5 hours. The membrane was stripped and reblotted with HRP-conjugated Alpha Tubulin Monoclonal antibody (HRP-66031) as loading control.

IP result of anti-MRPL38 (IP:68418-1-Ig, 4ug; Detection:68418-1-Ig 1:2000) with A549 cells lysate 920 ug.