

For Research Use Only

MPI Monoclonal antibody

Catalog Number: 68417-1-Ig



Basic Information

Catalog Number:

68417-1-Ig

Size:

1000 µg/ml

Source:

Mouse

Isotype:

IgG1

Immunogen Catalog Number:

AG5475

GenBank Accession Number:

BC046357

GeneID (NCBI):

4351

UNIPROT ID:

P34949

Full Name:

mannose phosphate isomerase

Calculated MW:

47 kDa

Observed MW:

40-47 kDa

Purification Method:

Protein G purification

CloneNo.:

3B10A6

Recommended Dilutions:

WB 1:5000-1:50000

IP 0.5-4.0 µg for 1.0-3.0 mg of total protein lysate

IF 1:500-1:2000

Applications

Tested Applications:

IF/ICC, IP, WB, ELISA

Species Specificity:

Human, Rat, Pig, Mouse

Positive Controls:

WB : MCF-7 cells, rat brain tissue, A549 cells, LnCaP cells, Jurkat cells, K-562 cells, pig brain tissue

IP : Jurkat cells,

IF : NIH/3T3 cells,

Background Information

MPI (mannose-6-phosphate isomerase) is also named as PMI 1 and belongs to the mannose-6-phosphate isomerase type 1 family. It is a zinc metalloenzyme that catalyzes the reversible isomerization of mannose-6-phosphate and fructose-6-phosphate. MPI plays a critical role in maintaining the supply of D-mannose derivatives, which are required for most glycosylation reactions. This protein has 2 isoforms produced by alternative splicing.

Storage

Storage:

Store at -20°C. Stable for one year after shipment.

Storage Buffer:

PBS with 0.02% sodium azide and 50% glycerol pH 7.3.

Aliquoting is unnecessary for -20°C storage

For technical support and original validation data for this product please contact:

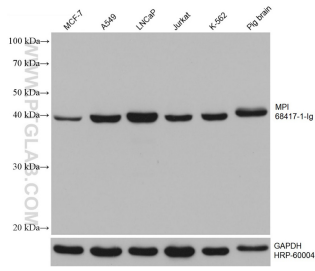
T: 4006900926

E: Proteintech-CN@ptglab.com

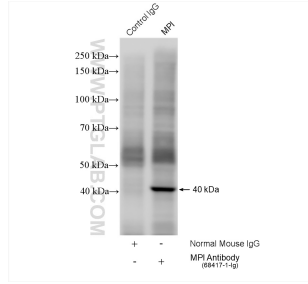
W: ptgcn.com

This product is exclusively available under Proteintech Group brand and is not available to purchase from any other manufacturer.

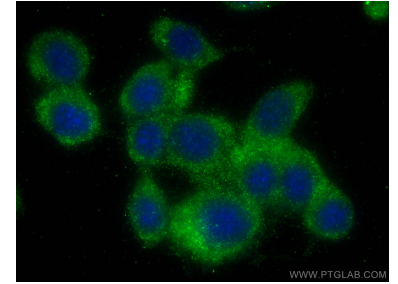
Selected Validation Data



Various lysates were subjected to SDS PAGE followed by western blot with 68417-1-Ig (MPI antibody) at dilution of 1:10000 incubated at room temperature for 1.5 hours. The membrane was stripped and reblotted with HRP-conjugated GAPDH Monoclonal antibody (HRP-60004) as loading control.



IP result of anti-MPI (IP:68417-1-Ig, 4ug; Detection:68417-1-Ig 1:2000) with Jurkat cells lysate 2280 ug.



Immunofluorescent analysis of (-20°C Methanol) fixed NIH/3T3 cells using MPI antibody (68417-1-Ig, Clone: 3B10A6) at dilution of 1:1000 and CoraLite@488-Conjugated AffiniPure Goat Anti-Mouse IgG(H+L).