

# TAP1 Monoclonal antibody, PBS Only

Catalog Number: 68412-1-PBS

## Basic Information

Catalog Number:

68412-1-PBS

Size:

1 mg/ml

Source:

Mouse

Isotype:

IgG2b

Immunogen Catalog Number:

AG21303

GenBank Accession Number:

BC014081

GeneID (NCBI):

6890

UNIPROT ID:

Q03518

Full Name:

transporter 1, ATP-binding cassette, sub-family B (MDR/TAP)

Calculated MW:

81 kDa

Observed MW:

70 kDa

Purification Method:

Protein A purification

CloneNo.:

1B8A7

## Applications

Tested Applications:

WB, Indirect ELISA, IHC, IF

Species Specificity:

Human

## Background Information

TAP1, also known as ABCB2, PSF1 or RING4, is a member of the ATP-binding cassette (ABC) family of transmembrane transporters and is an essential component of the major histocompatibility complex (MHC) class I antigen-presenting pathway. TAP is involved in the transport of antigens from the cytoplasm to the endoplasmic reticulum for association with MHC class I molecules. It also acts as a molecular scaffold for the final stage of MHC class I folding. Defects in TAP1 are a cause of bare lymphocyte syndrome type 1 (BLS1). Western blot analysis using this antibody detected a major band around 70 kDa.

## Storage

Storage:

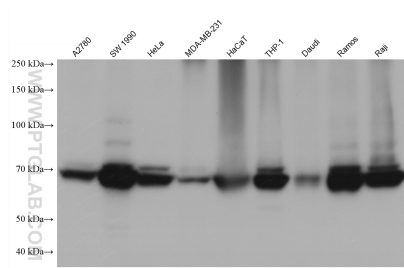
Store at -80°C.

The product is shipped with ice packs. Upon receipt, store it immediately at -80°C

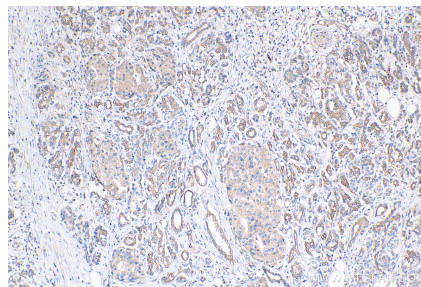
Storage Buffer:

PBS Only

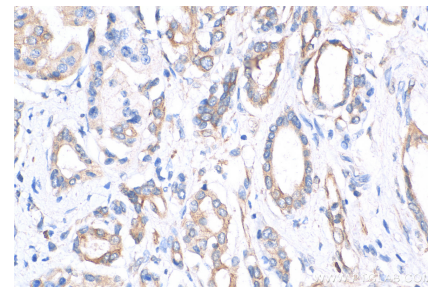
## Selected Validation Data



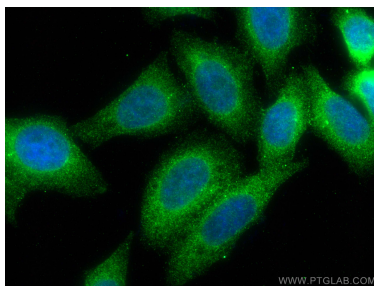
Various lysates were subjected to SDS PAGE followed by western blot with 68412-1-Ig (TAP1 antibody) at dilution of 1:10000 incubated at room temperature for 1.5 hours. This data was developed using the same antibody clone with 68412-1-PBS in a different storage buffer formulation.



Immunohistochemical analysis of paraffin-embedded human pancreas cancer tissue slide using 68412-1-Ig (TAP1 antibody) at dilution of 1:1000 (under 10x lens). Heat mediated antigen retrieval with Tris-EDTA buffer (pH 9.0). This data was developed using the same antibody clone with 68412-1-PBS in a different storage buffer formulation.



Immunohistochemical analysis of paraffin-embedded human pancreas cancer tissue slide using 68412-1-Ig (TAP1 antibody) at dilution of 1:1000 (under 40x lens). Heat mediated antigen retrieval with Tris-EDTA buffer (pH 9.0). This data was developed using the same antibody clone with 68412-1-PBS in a different storage buffer formulation.



Immunofluorescent analysis of (4% PFA) fixed HepG2 cells using TAP1 antibody (68412-1-Ig, Clone: 1B8A7) at dilution of 1:1000 and CoraLite®488-Conjugated AffiniPure Goat Anti-Mouse IgG(H+L). This data was developed using the same antibody clone with 68412-1-PBS in a different storage buffer formulation.