

# SYAP1 Monoclonal antibody

Catalog Number: 68410-1-Ig

## Basic Information

**Catalog Number:**

68410-1-Ig

**Size:**

1000 µg/ml

**Source:**

Mouse

**Isotype:**

IgG2b

**Immunogen Catalog Number:**

AG9626

**GenBank Accession Number:**

BC014657

**GeneID (NCBI):**

94056

**UNIPROT ID:**

Q96A49

**Full Name:**synapse associated protein 1, SAP47  
homolog (Drosophila)**Calculated MW:**

352 aa, 40 kDa

**Observed MW:**

50-55 kDa

**Purification Method:**

Protein A purification

**CloneNo.:**

2E12A5

**Recommended Dilutions:**

WB 1:5000-1:50000

IP 0.5-4.0 µg for 1.0-3.0 mg of total  
protein lysate

IF/ICC 1:400-1:1600

## Applications

**Tested Applications:**

IF/ICC, IP, WB, ELISA

**Species Specificity:**

Human, mouse, rat

**Positive Controls:****WB** : U2OS cells, A549 cells, LNCaP cells, HeLa cells,  
Jurkat cells, K-562 cells, HSC-T6 cells, NIH/3T3 cells**IP** : L02 cells,**IF/ICC** : HepG2 cells,

## Background Information

SYAP1(Synapse-associated protein 1) is a human homologue of the Drosophila SAP47 (synapse associated protein), which is recognized by a monoclonal antibody that selectively stain synaptic terminals. This protein is a 352 amino acid protein that is ubiquitously expressed in adult tissues. SYAP1 contains one BSD domain which is an approximately 60 amino acid long protein domain named after the BTF2-like transcription factors, Synapse-associated proteins and DOS2-like proteins in which it is found.

## Storage

**Storage:**

Store at -20°C. Stable for one year after shipment.

**Storage Buffer:**

PBS with 0.02% sodium azide and 50% glycerol pH 7.3.

Aliquoting is unnecessary for -20°C storage

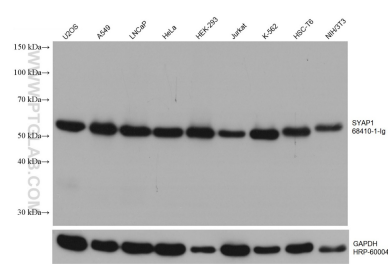
For technical support and original validation data for this product please contact:

T: 4006900926

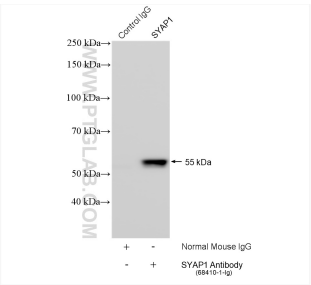
E: [Proteintech-CN@ptglab.com](mailto:Proteintech-CN@ptglab.com)W: [ptgcn.com](http://ptgcn.com)

This product is exclusively available under Proteintech Group brand and is not available to purchase from any other manufacturer.

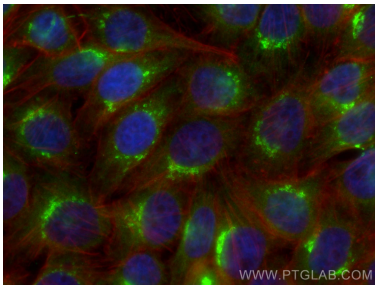
Selected Validation Data



Various lysates were subjected to SDS PAGE followed by western blot with 68410-1-Ig (SYAP1 antibody) at dilution of 1:10000 incubated at room temperature for 1.5 hours. The membrane was stripped and reblotted with HRP-conjugated GAPDH Monoclonal antibody (HRP-60004) as loading control.



IP result of anti-SYAP1 (IP:68410-1-Ig, 4ug; Detection:68410-1-Ig 1:2000) with L02 cells lysate 3080 ug.



Immunofluorescent analysis of (4% PFA) fixed HepG2 cells using SYAP1 antibody (68410-1-Ig, Clone: 2E12A5 ) at dilution of 1:800 and CoraLite®488-Conjugated AffiniPure Goat Anti-Mouse IgG(H+L), CL594-Phalloidin (red).