

ISG15 Monoclonal antibody, PBS Only

Catalog Number: **68408-1-PBS**

Basic Information

Catalog Number: 68408-1-PBS	GenBank Accession Number: BC009507	Purification Method: Protein A purification
Size: 1 mg/ml	GeneID (NCBI): 9636	CloneNo.: 3G9A2
Source: Mouse	UNIPROT ID: P05161	
Isotype: IgG2a	Full Name: ISG15 ubiquitin-like modifier	
Immunogen Catalog Number: AG8953	Calculated MW: 165 aa, 18 kDa	
	Observed MW: 13-17 kDa	

Applications

Tested Applications:
WB, Indirect ELISA

Species Specificity:
Human

Background Information

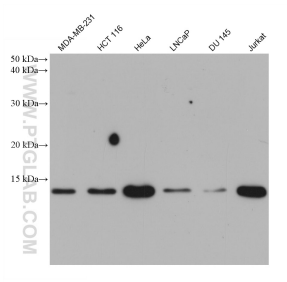
ISG15 is a ubiquitin-like protein that becomes conjugated to many cellular proteins upon activation by interferon-alpha (IFNA) and -beta (IFNB). ISG15 forms covalent conjugates with its target proteins in a process called ISGylation, which in mammals is known to play a role in antiviral immunity. ISG15 proteins possess two ubiquitin-like (UBL) domains and a highly conserved C-terminal LRGG sequence, the latter being known as the ubiquitin conjugation motif. Intracellular ISG15 are conjugated, via the LRGG motif, to target proteins through a process called ISGylation, which resembles largely ubiquitination, the process of formation of ubiquitin conjugates. Unconjugated extracellular ISG15, which are released from several types of human and murine cells, are known to possess cytokine-like activity.

Storage

Storage:
Store at **-80°C**.
The product is shipped with ice packs. Upon receipt, store it immediately at -80°C

Storage Buffer:
PBS Only

Selected Validation Data



Various lysates were subjected to SDS PAGE followed by western blot with 68408-1-Ig (ISG15 antibody) at dilution of 1:5000 incubated at room temperature for 1.5 hours. This data was developed using the same antibody clone with 68408-1-PBS in a different storage buffer formulation.