

For Research Use Only

ISG15 Monoclonal antibody

Catalog Number: 68408-1-Ig **1 Publications**



Basic Information

Catalog Number: 68408-1-Ig	GenBank Accession Number: BC009507	Purification Method: Protein A purification
Size: 1000 µg/ml	GeneID (NCBI): 9636	CloneNo.: 3G9A2
Source: Mouse	UNIPROT ID: P05161	Recommended Dilutions: WB 1:2000-1:10000
Isotype: IgG2a	Full Name: ISG15 ubiquitin-like modifier	
Immunogen Catalog Number: AG8953	Calculated MW: 165 aa, 18 kDa	
	Observed MW: 13-17 kDa	

Applications

Tested Applications: WB, ELISA	Positive Controls: WB : MDA-MB-231 cells, LNCaP cells, A431 cells, HeLa cells, HCT 116 cells, HeLa cells, DU 145 cells, Jurkat cells
Cited Applications: IHC	
Species Specificity: Human	
Cited Species: human	

Background Information

ISG15 is a ubiquitin-like protein that becomes conjugated to many cellular proteins upon activation by interferon- α (IFNA) and - β (IFNB). ISG15 forms covalent conjugates with its target proteins in a process called ISGylation, which in mammals is known to play a role in antiviral immunity. ISG15 proteins possess two ubiquitin-like (UBL) domains and a highly conserved C-terminal LRGG sequence, the latter being known as the ubiquitin conjugation motif. Intracellular ISG15 are conjugated, via the LRGG motif, to target proteins through a process called ISGylation, which resembles largely ubiquitination, the process of formation of ubiquitin conjugates. Unconjugated extracellular ISG15, which are released from several types of human and murine cells, are known to possess cytokine-like activity.

Notable Publications

Author	Pubmed ID	Journal	Application
Haruto Nishida	39053305	Exp Mol Pathol	IHC

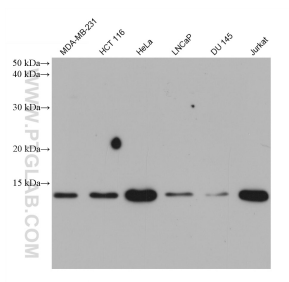
Storage

Storage:
Store at -20°C. Stable for one year after shipment.
Storage Buffer:
PBS with 0.02% sodium azide and 50% glycerol pH 7.3.
Aliquoting is unnecessary for -20°C storage

For technical support and original validation data for this product please contact:
T: 4006900926 E: Proteintech-CN@ptglab.com W: ptgcn.com

This product is exclusively available under Proteintech Group brand and is not available to purchase from any other manufacturer.

Selected Validation Data



Various lysates were subjected to SDS PAGE followed by western blot with 68408-1-Ig (ISG15 antibody) at dilution of 1:5000 incubated at room temperature for 1.5 hours.