

STUB1 Monoclonal antibody

Catalog Number: 68407-1-Ig

Basic Information

Catalog Number:

68407-1-Ig

Size:

1000 ug/ml

Source:

Mouse

Isotype:

IgG1

GenBank Accession Number:

NM_005861

GeneID (NCBI):

10273

UNIPROT ID:

Q9UNE7

Full Name:STIP1 homology and U-box
containing protein 1**Calculated MW:**

35 kDa

Observed MW:

35 kDa

Purification Method:

Protein A purification

CloneNo.:

2E6B9

Recommended Dilutions:

WB 1:5000-1:50000

IF/ICC 1:400-1:1600

Applications

Tested Applications:

IF/ICC, WB, ELISA

Species Specificity:

human, rat

Positive Controls:**WB** : HeLa cells, HEK-293 cells, Jurkat cells, K-562 cells,
HSC-T6 cells**IF/ICC** : MCF-7 cells,

Background Information

STUB1, also named as CHIP, SDCCAG7, UBOX1 and NY-CO-7, is a E3 ubiquitin-protein ligase which targets misfolded chaperone substrates towards proteasomal degradation. STUB1/CHIP modulates the activity of several chaperone complexes, including Hsp70, Hsc70 and Hsp90. It mediates transfer of non-canonical short ubiquitin chains to HSPA8 that have no effect on HSPA8 degradation. STUB1/CHIP mediates polyubiquitination of CYP3A4. (PMID:10330192) CHIP/STUB1 strongly reduced keratin aggregates through increased degradation of mutant K14. (PMID:20151404) STUB1/CHIP regulates NAD(P)H:quinone oxidoreductase 1 (NQO1) accumulation in aged brain, a process impaired in certain Alzheimer patients. (PMID:21220432) This antibody is specific to STUB1.

Storage

Storage:

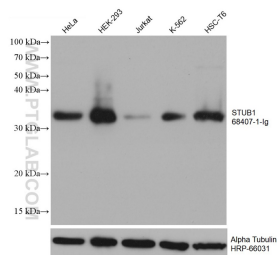
Store at -20°C. Stable for one year after shipment.

Storage Buffer:

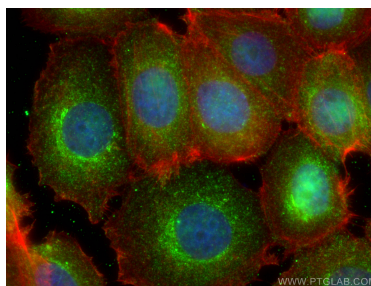
PBS with 0.02% sodium azide and 50% glycerol pH 7.3.

Aliquoting is unnecessary for -20°C storage

Selected Validation Data



Various lysates were subjected to SDS PAGE followed by western blot with 68407-1-Ig (STUB1 antibody) at dilution of 1:10000 incubated at room temperature for 1.5 hours. The membrane was stripped and reblotted with HRP-conjugated Alpha Tubulin Monoclonal antibody (HRP-66031) as loading control.



Immunofluorescent analysis of (4% PFA) fixed MCF-7 cells using STUB1 antibody (68407-1-Ig, Clone: 2E6B9) at dilution of 1:800 and CoraLite®488-Conjugated AffiniPure Goat Anti-Mouse IgG(H+L), CL594-Phalloidin (red).