

For Research Use Only

CHMP7 Monoclonal antibody

Catalog Number: 68406-1-Ig



Basic Information

Catalog Number: 68406-1-Ig	GenBank Accession Number: BC019110	Purification Method: Protein G purification
Size: 1000 µg/ml	GeneID (NCBI): 91782	CloneNo.: 2F8F6
Source: Mouse	UNIPROT ID: Q8WUX9	Recommended Dilutions: WB 1:5000-1:50000 IHC 1:1000-1:4000 IF 1:400-1:1600
Isotype: IgG1	Full Name: CHMP family, member 7	
Immunogen Catalog Number: AG9641	Calculated MW: 453 aa, 51 kDa	
	Observed MW: 51-55 kDa	

Applications

Tested Applications:
IF/ICC, IHC, WB, ELISA

Species Specificity:
Human, rat

Note-IHC: suggested antigen retrieval with TE buffer pH 9.0; (*) Alternatively, antigen retrieval may be performed with citrate buffer pH 6.0

Positive Controls:

WB: A549 cells, MCF-7 cells, HEK-293 cells, HepG2 cells, HeLa cells, Jurkat cells, K-562 cells, HSC-T6 cells

IHC: human prostate cancer tissue,

IF: A431 cells,

Background Information

Storage

Storage:
Store at -20°C. Stable for one year after shipment.
Storage Buffer:
PBS with 0.02% sodium azide and 50% glycerol pH 7.3.
Aliquoting is unnecessary for -20°C storage

For technical support and original validation data for this product please contact:

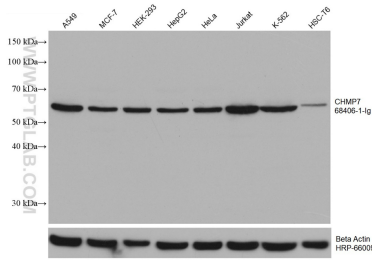
T: 4006900926

E: Proteintech-CN@ptglab.com

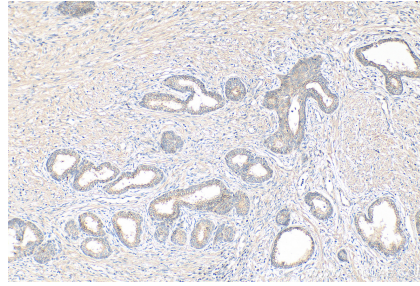
W: ptgcn.com

This product is exclusively available under Proteintech Group brand and is not available to purchase from any other manufacturer.

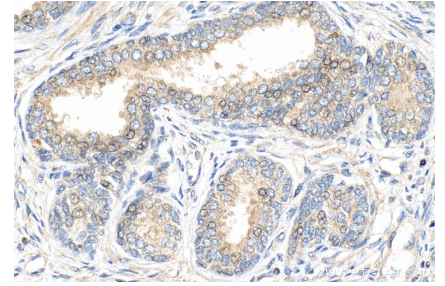
Selected Validation Data



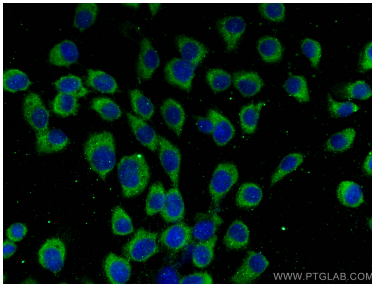
Various lysates were subjected to SDS PAGE followed by western blot with 68406-1-Ig (CHMP7 antibody) at dilution of 1:10000 incubated at room temperature for 1.5 hours. The membrane was stripped and reblotted with HRP-conjugated Beta Actin Monoclonal antibody (HRP-66009) as loading control.



Immunohistochemical analysis of paraffin-embedded human prostate cancer tissue slide using 68406-1-Ig (CHMP7 antibody) at dilution of 1:2000 (under 10x lens). Heat mediated antigen retrieval with Tris-EDTA buffer (pH 9.0).



Immunohistochemical analysis of paraffin-embedded human prostate cancer tissue slide using 68406-1-Ig (CHMP7 antibody) at dilution of 1:2000 (under 40x lens). Heat mediated antigen retrieval with Tris-EDTA buffer (pH 9.0).



Immunofluorescent analysis of (-20°C Methanol) fixed A431 cells using CHMP7 antibody (68406-1-Ig, Clone: 2F8F6) at dilution of 1:800 and CoraLite@488-Conjugated AffiniPure Goat Anti-Mouse IgG(H+L).