

AMOTL2 Monoclonal antibody

Catalog Number: 68401-1-Ig

Basic Information

Catalog Number:

68401-1-Ig

Size:

1000 µg/ml

Source:

Mouse

Isotype:

IgG1

Immunogen Catalog Number:

AG19971

GenBank Accession Number:

BC011454

GeneID (NCBI):

51421

UNIPROT ID:

Q9Y2J4

Full Name:

angiotensin like 2

Calculated MW:

779 aa, 86 kDa

Observed MW:

100 kDa

Purification Method:

Protein G purification

CloneNo.:

2C4A4

Recommended Dilutions:

WB 1:2000-1:10000

IF/ICC 1:500-1:2000

Applications

Tested Applications:

IF/ICC, WB, ELISA

Species Specificity:

Human

Positive Controls:

WB : A549 cells, DU 145 cells, Saos-2 cells, NCI-H1299 cells, MDA-MB-468 cells, SK-BR-3 cells

IF/ICC : A549 cells,

Background Information

Angiotensin like 2 (AMOTL2) is a member of the motin family of angiotensin binding proteins. The motin family, also known as AMOTs, consists of three members: AMOT, AMOT-like 1 (AMOTL1) and AMOTL2. Members of the motin family are a type of adaptor proteins mainly distributed in the cytomembrane, cytoplasm or nucleus, and have a higher expression in the endothelial cells of capillaries and in larger vessels of the placenta. Human Amotl2 encodes two isoforms of a molecular mass of 100 kDa and 60 kDa. (PMID: 34036399, PMID: 25080976)

Storage

Storage:

Store at -20°C. Stable for one year after shipment.

Storage Buffer:

PBS with 0.02% sodium azide and 50% glycerol pH 7.3.

Aliquoting is unnecessary for -20°C storage

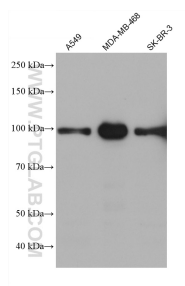
For technical support and original validation data for this product please contact:

T: 4006900926

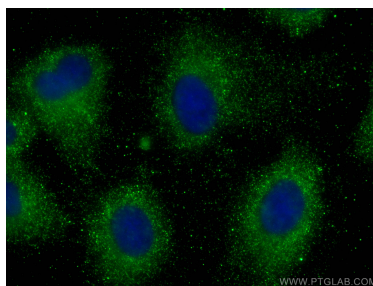
E: Proteintech-CN@ptglab.comW: ptgcn.com

This product is exclusively available under Proteintech Group brand and is not available to purchase from any other manufacturer.

Selected Validation Data



Various lysates were subjected to SDS PAGE followed by western blot with 68401-1-Ig (AMOTL2 antibody) at dilution of 1:5000 incubated at room temperature for 1.5 hours.



Immunofluorescent analysis of (-20°C Methanol) fixed A549 cells using AMOTL2 antibody (68401-1-Ig, Clone: 2C4A4) at dilution of 1:1000 and CoraLite®488-Conjugated AffiniPure Goat Anti-Mouse IgG(H+L).