

# METTL6 Monoclonal antibody

Catalog Number: 68400-1-Ig

## Basic Information

## Catalog Number:

68400-1-Ig

## Size:

1000 µg/ml

## Source:

Mouse

## Isotype:

IgG2b

## Immunogen Catalog Number:

AG9714

## GenBank Accession Number:

BC022400

## GeneID (NCBI):

131965

## UNIPROT ID:

Q8TCB7

## Full Name:

methyltransferase like 6

## Calculated MW:

255 aa, 30 kDa

## Observed MW:

30-32 kDa

## Purification Method:

Protein A purification

## CloneNo.:

1C7D4

## Recommended Dilutions:

WB 1:5000-1:50000

IHC 1:1000-1:4000

## Applications

## Tested Applications:

IHC, WB, ELISA

## Species Specificity:

Human

**Note-IHC: suggested antigen retrieval with TE buffer pH 9.0; (\*) Alternatively, antigen retrieval may be performed with citrate buffer pH 6.0**

## Positive Controls:

**WB** : HeLa cells, HepG2 cells, LNCaP cells, HEK-293 cells, Jurkat cells, K-562 cells

**IHC** : human breast cancer tissue, human lung cancer tissue

## Background Information

Methyltransferase-like protein 6 (METTL6) belongs to the METL family. METTL6 is as a crucial regulator of tumor cell growth, and METTL6 is a bona fide transfer RNA (tRNA) methyltransferase, catalyzing the formation of 3-methylcytidine at C32 of specific serine tRNA isoacceptors (PMID:32923617). METTL6 is a member of the RNA methyltransferase family that has been identified in many cancers. The mRNA expression levels of METTL6 were significantly upregulated in HCC tumor tissues compared to that in adjacent nontumor tissues. CRISPR/Cas9 mediated knockout of METTL6 in hepatocellular carcinoma cell lines remarkably inhibited colony formation, cell proliferation, cell migration, cell invasion and cell attachment ability (PMID:34913069).

## Storage

## Storage:

Store at -20°C. Stable for one year after shipment.

## Storage Buffer:

PBS with 0.02% sodium azide and 50% glycerol pH 7.3.

Aliquoting is unnecessary for -20°C storage

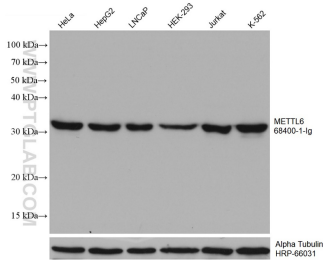
For technical support and original validation data for this product please contact:

T: 4006900926

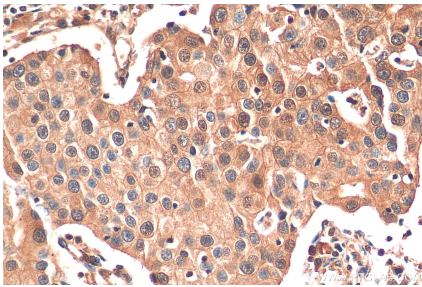
E: [Proteintech-CN@ptglab.com](mailto:Proteintech-CN@ptglab.com)W: [ptgcn.com](http://ptgcn.com)

**This product is exclusively available under Proteintech Group brand and is not available to purchase from any other manufacturer.**

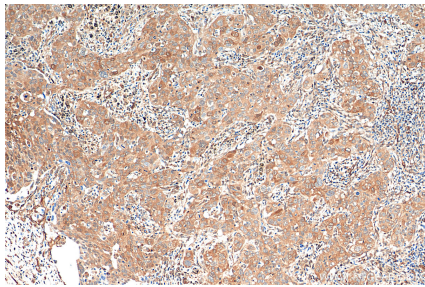
Selected Validation Data



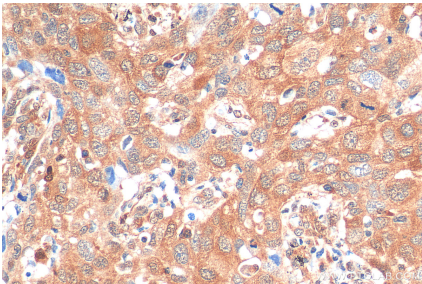
Various lysates were subjected to SDS PAGE followed by western blot with 68400-1-Ig (METTL6 antibody) at dilution of 1:20000 incubated at room temperature for 1.5 hours. The membrane was stripped and reblotted with HRP-conjugated Alpha Tubulin Monoclonal antibody (HRP-66031) as loading control.



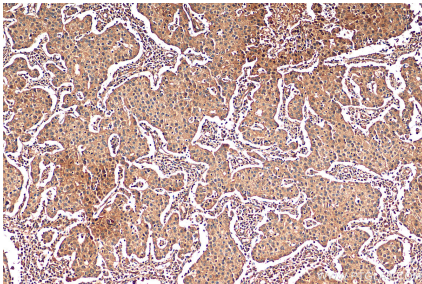
Immunohistochemical analysis of paraffin-embedded human breast cancer tissue slide using 68400-1-Ig (METTL6 antibody) at dilution of 1:2000 (under 40x lens). Heat mediated antigen retrieval with Tris-EDTA buffer (pH 9.0).



Immunohistochemical analysis of paraffin-embedded human lung cancer tissue slide using 68400-1-Ig (METTL6 antibody) at dilution of 1:2000 (under 10x lens). Heat mediated antigen retrieval with Tris-EDTA buffer (pH 9.0).



Immunohistochemical analysis of paraffin-embedded human lung cancer tissue slide using 68400-1-Ig (METTL6 antibody) at dilution of 1:2000 (under 40x lens). Heat mediated antigen retrieval with Tris-EDTA buffer (pH 9.0).



Immunohistochemical analysis of paraffin-embedded human breast cancer tissue slide using 68400-1-Ig (METTL6 antibody) at dilution of 1:2000 (under 10x lens). Heat mediated antigen retrieval with Tris-EDTA buffer (pH 9.0).