

ALDOB Monoclonal antibody, PBS Only

Catalog Number: 68396-1-PBS

Basic Information

Catalog Number: 68396-1-PBS	GenBank Accession Number: BC029399	Purification Method: Protein A purification
Size: 1mg/ml	GeneID (NCBI): 229	CloneNo.: 3D2E4
Source: Mouse	UNIPROT ID: P05062	
Isotype: IgG2a	Full Name: aldolase B, fructose-bisphosphate	
Immunogen Catalog Number: AG12823	Calculated MW: 316 aa, 35 kDa	
	Observed MW: 35-40 kDa	

Applications

Tested Applications:
WB, IF, Indirect ELISA

Species Specificity:
Human, mouse, rat, rabbit

Background Information

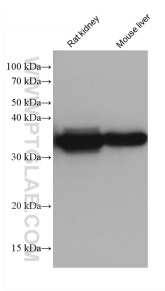
Fructose-1,6-bisphosphate aldolase is a glycolytic enzyme that catalyzes the reversible conversion of fructose-1,6-bisphosphate to glyceraldehyde 3-phosphate and dihydroxyacetone phosphate. Vertebrates have 3 aldolase isozymes, aldolase A (ALDOA), B (ALDOB), and C (ALDOC). Deficiency of this enzyme ALDOB causes an accumulation of fructose-1-phosphate after fructose intake, which results in toxic symptoms like vomiting, hypoglycemia, jaundice, elevated liver enzymes and hepatomegaly (PMID:22375183). This antibody may detect ALDOA.

Storage

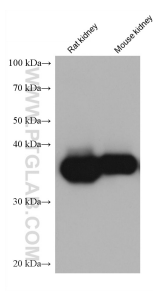
Storage:
Store at -80°C.
The product is shipped with ice packs. Upon receipt, store it immediately at -80°C

Storage Buffer:
PBS Only

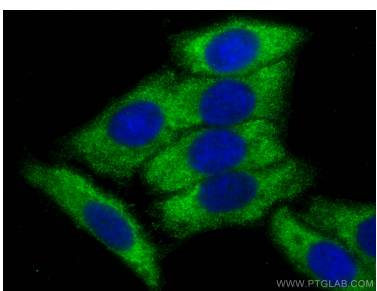
Selected Validation Data



Various lysates were subjected to SDS PAGE followed by western blot with 68396-1-Ig (ALDOB antibody) at dilution of 1:10000 incubated at room temperature for 1.5 hours. This data was developed using the same antibody clone with 68396-1-PBS in a different storage buffer formulation.



Various lysates were subjected to SDS PAGE followed by western blot with 68396-1-Ig (ALDOB antibody) at dilution of 1:10000 incubated at room temperature for 1.5 hours. This data was developed using the same antibody clone with 68396-1-PBS in a different storage buffer formulation.



Immunofluorescent analysis of (-20°C Ethanol) fixed HepG2 cells using ALDOB antibody (68396-1-Ig, Clone: 3D2E4) at dilution of 1:800 and CoraLite®488-Conjugated AffiniPure Goat Anti-Mouse IgG(H+L). This data was developed using the same antibody clone with 68396-1-PBS in a different storage buffer formulation.