

ALDOB Monoclonal antibody

Catalog Number: 68396-1-Ig

Basic Information

Catalog Number:

68396-1-Ig

Size:

1000 µg/ml

Source:

Mouse

Isotype:

IgG2a

Immunogen Catalog Number:

AG12823

GenBank Accession Number:

BC029399

GeneID (NCBI):

229

UNIPROT ID:

P05062

Full Name:

aldolase B, fructose-bisphosphate

Calculated MW:

316 aa, 35 kDa

Observed MW:

35-40 kDa

Purification Method:

Protein A purification

CloneNo.:

3D2E4

Recommended Dilutions:

WB 1:5000-1:50000

IF/ICC 1:400-1:1600

Applications

Tested Applications:

WB, IF/ICC, ELISA

Species Specificity:

Human, mouse, rat, rabbit

Positive Controls:

WB : rat kidney tissue, human urine sample, rabbit liver tissue, rat liver tissue, mouse liver tissue, mouse kidney tissue

IF/ICC : HepG2 cells,

Background Information

Fructose-1,6-bisphosphate aldolase is a glycolytic enzyme that catalyzes the reversible conversion of fructose-1,6-bisphosphate to glyceraldehyde 3-phosphate and dihydroxyacetone phosphate. Vertebrates have 3 aldolase isozymes, aldolase A (ALDOA), B (ALDOB), and C (ALDOC). Deficiency of this enzyme ALDOB causes an accumulation of fructose-1-phosphate after fructose intake, which results in toxic symptoms like vomiting, hypoglycemia, jaundice, elevated liver enzymes and hepatomegaly (PMID:22375183). This antibody may detect ALDOA.

Storage

Storage:

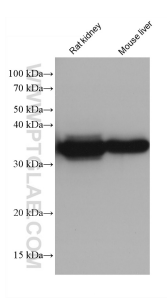
Store at -20°C. Stable for one year after shipment.

Storage Buffer:

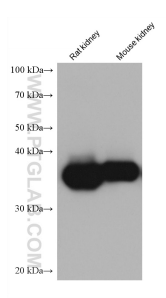
PBS with 0.02% sodium azide and 50% glycerol pH 7.3.

Aliquoting is unnecessary for -20°C storage

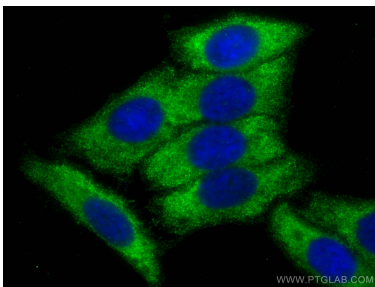
Selected Validation Data



Various lysates were subjected to SDS PAGE followed by western blot with 68396-1-Ig (ALDOB antibody) at dilution of 1:10000 incubated at room temperature for 1.5 hours.



Various lysates were subjected to SDS PAGE followed by western blot with 68396-1-Ig (ALDOB antibody) at dilution of 1:10000 incubated at room temperature for 1.5 hours.



Immunofluorescent analysis of (-20°C Ethanol) fixed HepG2 cells using ALDOB antibody (68396-1-Ig, Clone: 3D2E4) at dilution of 1:800 and CoraLite®488-Conjugated AffiniPure Goat Anti-Mouse IgG(H+L).