

For Research Use Only

PFKL Monoclonal antibody

Catalog Number: 68385-1-Ig



Basic Information

Catalog Number: 68385-1-Ig	GenBank Accession Number: BC008964	Purification Method: Protein G purification
Size: 1000 µg/ml	GeneID (NCBI): 5211	CloneNo.: 1H2G2
Source: Mouse	UNIPROT ID: P17858	Recommended Dilutions: WB 1:5000-1:50000 IHC 1:1000-1:4000 IF 1:400-1:1600
Isotype: IgG1	Full Name: phosphofructokinase, liver	
Immunogen Catalog Number: AG8250	Calculated MW: 85 kDa	
	Observed MW: 85 kDa	

Applications

Tested Applications:
WB, IF/ICC, FC, IHC, ELISA

Species Specificity:
Human, Mouse, Rat, Rabbit, Pig

Note-IHC: suggested antigen retrieval with TE buffer pH 9.0; (*) Alternatively, antigen retrieval may be performed with citrate buffer pH 6.0

Positive Controls:

WB : LNCaP cells, HeLa cells, HEK-293 cells, Jurkat cells, K-562 cells, pig brain tissue, rabbit brain tissue, rat brain tissue, mouse brain tissue

IHC : human lung cancer tissue, human liver tissue, human ovary tumor tissue, mouse liver tissue

IF : HuH-7 cells,

Background Information

PFKL (6-phosphofructokinase, liver type) is also named as PFK-B and belongs to the phosphofructokinase family. The PFKL gene encodes the liver isoform of phosphofructokinase (PFK) (ATP: D-fructose-6-phosphate-1-phosphotransferase). PFK catalyzes the irreversible conversion of fructose-6-phosphate to fructose-1,6-bisphosphate and is a key regulatory enzyme in glycolysis. In human beings, PFK exists as a system of three subunits: these are the muscle(PFKM), liver(PFKL), and platelet(PFKP) PFKs (PMID: 2139864). It has 2 isoforms produced by alternative splicing.

Storage

Storage:
Store at -20°C. Stable for one year after shipment.
Storage Buffer:
PBS with 0.02% sodium azide and 50% glycerol pH 7.3.
Aliquoting is unnecessary for -20°C storage

For technical support and original validation data for this product please contact:

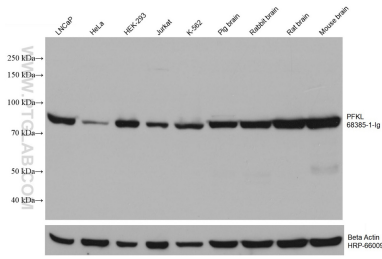
T: 4006900926

E: Proteintech-CN@ptglab.com

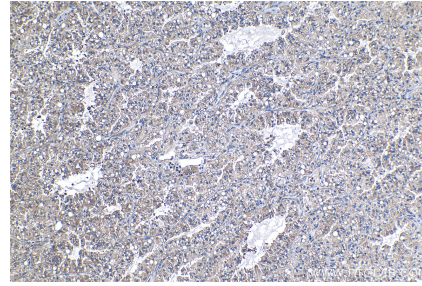
W: ptgcn.com

This product is exclusively available under Proteintech Group brand and is not available to purchase from any other manufacturer.

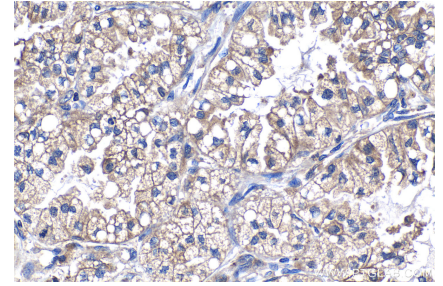
Selected Validation Data



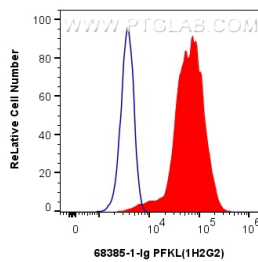
Various lysates were subjected to SDS PAGE followed by western blot with 68385-1-Ig (PFKL antibody) at dilution of 1:10000 incubated at room temperature for 1.5 hours. The membrane was stripped and reblotted with HRP-conjugated Beta Actin Monoclonal antibody (HRP-66009) as loading control.



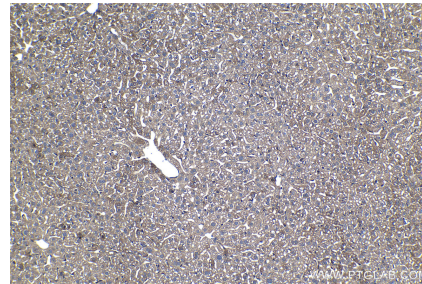
Immunohistochemical analysis of paraffin-embedded human lung cancer tissue slide using 68385-1-Ig (PFKL antibody) at dilution of 1:2000 (under 10x lens). Heat mediated antigen retrieval with Tris-EDTA buffer (pH 9.0).



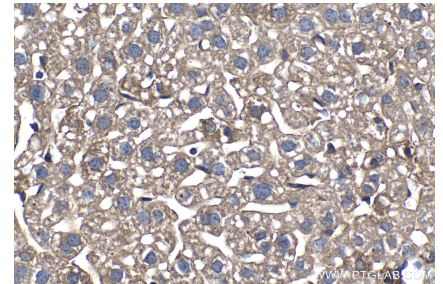
Immunohistochemical analysis of paraffin-embedded human lung cancer tissue slide using 68385-1-Ig (PFKL antibody) at dilution of 1:2000 (under 40x lens). Heat mediated antigen retrieval with Tris-EDTA buffer (pH 9.0).



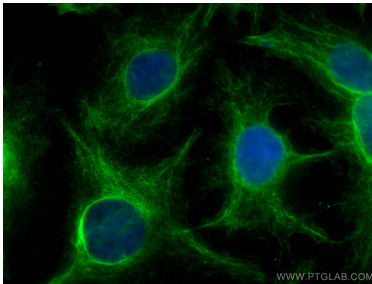
1×10^6 HEK-293 cells were intracellularly stained with 0.8 ug PFKL Monoclonal antibody (68385-1-Ig, Clone:1H2G2) and CoraLite®488-Conjugated AffiniPure Goat Anti-Mouse IgG(H+L) (SA00013-1) (red), or 0.8 ug Mouse IgG1 isotype control Mouse McAb (66360-1-Ig, Clone: 1F8D3) (blue). Cells were fixed with 4% PFA and permeabilized with Flow Cytometry Perm Buffer (PF00011-C).



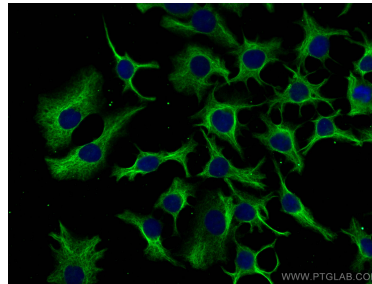
Immunohistochemical analysis of paraffin-embedded mouse liver tissue slide using 68385-1-Ig (PFKL antibody) at dilution of 1:2000 (under 10x lens). Heat mediated antigen retrieval with Tris-EDTA buffer (pH 9.0).



Immunohistochemical analysis of paraffin-embedded mouse liver tissue slide using 68385-1-Ig (PFKL antibody) at dilution of 1:2000 (under 40x lens). Heat mediated antigen retrieval with Tris-EDTA buffer (pH 9.0).



Immunofluorescent analysis of (4% PFA) fixed HuH-7 cells using PFKL antibody (68385-1-Ig, Clone: 1H2G2) at dilution of 1:800 and CoraLite®488-Conjugated AffiniPure Goat Anti-Mouse IgG(H+L).



Immunofluorescent analysis of (-20°C Methanol) fixed HuH-7 cells using PFKL antibody (68385-1-Ig, Clone: 1H2G2) at dilution of 1:800 and CoraLite®488-Conjugated AffiniPure Goat Anti-Mouse IgG(H+L).