

For Research Use Only

# DPP4/CD26 Monoclonal antibody, PBS Only (Detector)

Catalog Number: 68383-2-PBS



## Basic Information

Catalog Number:

68383-2-PBS

Concentration:

1 mg/ml

Source:

Mouse

Isotype:

IgG2a

Immunogen Catalog Number:

EG0157

GenBank Accession Number:

BC013329

GeneID (NCBI):

1803

UNIPROT ID:

P27487

Full Name:

dipeptidyl-peptidase 4

Calculated MW:

88 kDa

Purification Method:

Protein A purification

CloneNo.:

1G3B4

## Applications

Tested Applications:

Sandwich ELISA, Indirect ELISA, Sample test

Species Specificity:

human

## Background Information

### Storage

Storage:

Store at -80°C.

The product is shipped with ice packs. Upon receipt, store it immediately at -80°C

Storage Buffer:

PBS only, pH7.3

For technical support and original validation data for this product please contact:

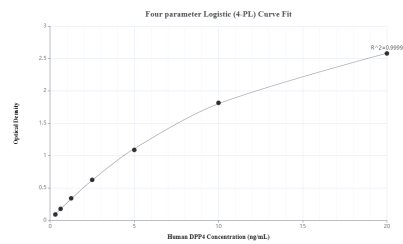
T: 4006900926

E: [Proteintech-CN@ptglab.com](mailto:Proteintech-CN@ptglab.com)

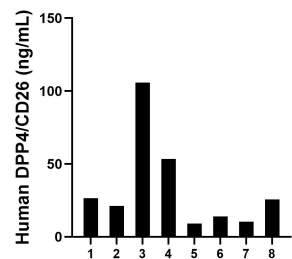
W: [ptgcn.com](http://ptgcn.com)

This product is exclusively available under Proteintech Group brand and is not available to purchase from any other manufacturer.

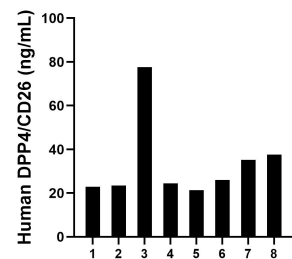
## Selected Validation Data



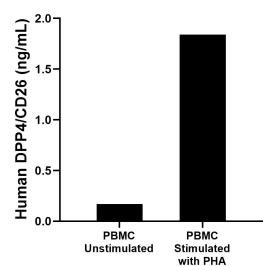
Sandwich ELISA standard curve of MP50051-1, DPP4 Monoclonal Matched Antibody Pair, PBS Only. Capture antibody: 68383-1-PBS. Detection antibody: 68383-2-PBS. Standard: Eg0157. Range: 0.313-20 ng/mL



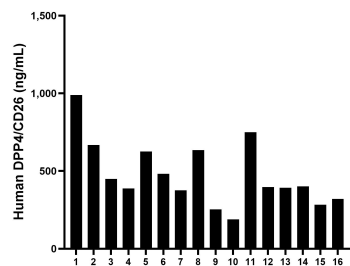
Urine of eight individual healthy human donors was measured. The DPP4/CD26 concentration of detected samples was determined to be 33.23 ng/mL with a range of 9.07-105.84 ng/mL



Saliva of eight individual healthy human donors was measured. The DPP4/CD26 concentration of detected samples was determined to be 33.57 ng/mL with a range of 21.27-77.69 ng/mL



Human peripheral blood mononuclear cells (PBMC) were cultured unstimulated or stimulated with 10  $\mu$ g/mL PHA for 5 days. The mean DPP4/CD26 concentration was determined to be 0.17 ng/mL in unstimulated PBMC supernatant, 1.84 ng/mL in PHA stimulated PBMC supernatant.



Serum of sixteen individual healthy human donors was measured. The DPP4/CD26 concentration of detected samples was determined to be 475.10 ng/mL with a range of 189.59-990.11 ng/mL