

For Research Use Only

# DPP4/CD26 Monoclonal antibody, PBS Only (Capture)

Catalog Number: 68383-1-PBS



## Basic Information

Catalog Number: 68383-1-PBS	GenBank Accession Number: BC013329	Purification Method: Protein G purification
Concentration: 3255 ug/ml	GeneID (NCBI): 1803	CloneNo.: 2G6D11
Source: Mouse	UNIPROT ID: P27487	
Isotype: IgG1	Full Name: dipeptidyl-peptidase 4	
Immunogen Catalog Number: EG0157	Calculated MW: 88 kDa	
	Observed MW: 110 kDa	

## Applications

**Tested Applications:**  
WB, IF/ICC, Sandwich ELISA, Indirect ELISA, Sample test

**Species Specificity:**  
human, pig, rabbit

## Background Information

CD26, also known as DPP4 (dipeptidyl peptidase-4), is a 110 kDa type II cell-surface glycoprotein widely expressed on T cells, activated B cells, activated NK cells and myeloid cells as well as on epithelial cells, fibroblasts, mesothelium, and endothelial cells of a variety of tissues (PMID:33777580; 26919392). It has ecto-enzyme activity in its extracellular domain and cleaves amino-terminal dipeptides with either L-proline or L-alanine at the penultimate position (PMID: 9553764). CD26 plays roles in diverse biological processes such as immunoregulation, glucose homeostasis, and tumorigenesis (PMID: 33777580).

## Storage

**Storage:**  
Store at -80°C.  
**The product is shipped with ice packs. Upon receipt, store it immediately at -80°C**

**Storage Buffer:**  
PBS only, pH7.3

For technical support and original validation data for this product please contact:

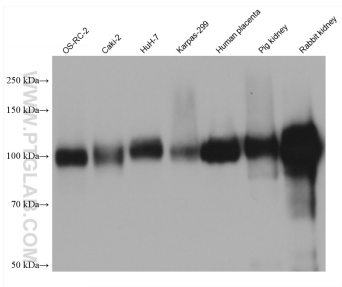
T: 4006900926

E: [Proteintech-CN@ptglab.com](mailto:Proteintech-CN@ptglab.com)

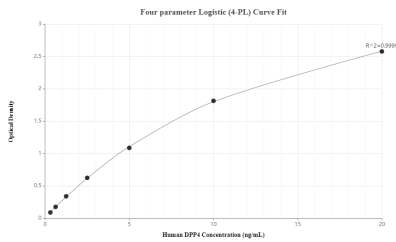
W: [ptgcn.com](http://ptgcn.com)

**This product is exclusively available under Proteintech Group brand and is not available to purchase from any other manufacturer.**

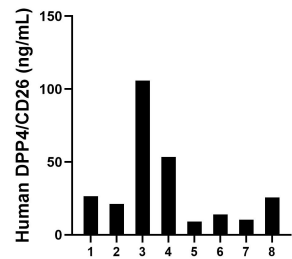
Selected Validation Data



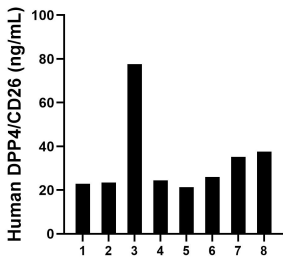
Various lysates were subjected to SDS PAGE followed by western blot with 68383-1-Ig (DPP4/CD26 antibody) at dilution of 1:10000 incubated at room temperature for 1.5 hours. This data was developed using the same antibody clone with 68383-1-PBS in a different storage buffer formulation.



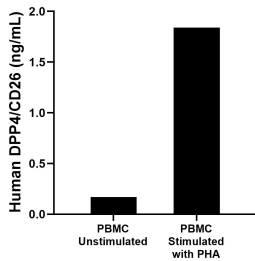
Sandwich ELISA standard curve of MP50051-1, DPP4 Monoclonal Matched Antibody Pair, PBS Only. Capture antibody: 68383-1-PBS. Detection antibody: 68383-2-PBS. Standard: Eg0157. Range: 0.313-20 ng/mL.



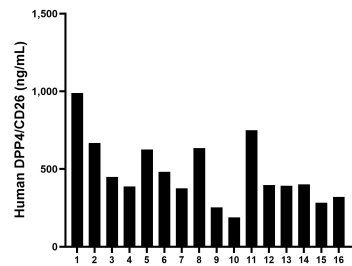
Urine of eight individual healthy human donors was measured. The DPP4/CD26 concentration of detected samples was determined to be 33.23 ng/mL with a range of 9.07-105.84 ng/mL.



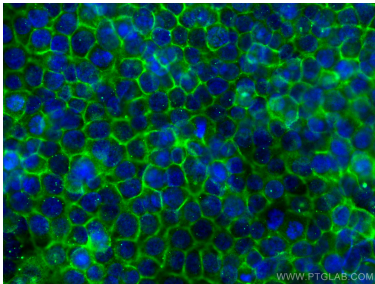
Saliva of eight individual healthy human donors was measured. The DPP4/CD26 concentration of detected samples was determined to be 33.57 ng/mL with a range of 21.27-77.69 ng/mL.



Human peripheral blood mononuclear cells (PBMC) were cultured unstimulated or stimulated with 10  $\mu$ g/mL PHA for 5 days. The mean DPP4/CD26 concentration was determined to be 0.17 ng/mL in unstimulated PBMC supernatant, 1.84 ng/mL in PHA stimulated PBMC supernatant.



Serum of sixteen individual healthy human donors was measured. The DPP4/CD26 concentration of detected samples was determined to be 475.10 ng/mL with a range of 189.59-990.11 ng/mL.



Immunofluorescent analysis of (-20°C Methanol) fixed HuH-7 cells using DPP4/CD26 antibody (68383-1-Ig, Clone: 2G6D11 ) at dilution of 1:800 and CoraLite®488-Conjugated AffiniPure Goat Anti-Mouse IgG(H+L). This data was developed using the same antibody clone with 68383-1-PBS in a different storage buffer formulation.