

For Research Use Only

DPP4/CD26 Monoclonal antibody

Catalog Number: 68383-1-Ig



Basic Information

Catalog Number:

68383-1-Ig

Size:

1000 µg/ml

Source:

Mouse

Isotype:

IgG1

GenBank Accession Number:

BC013329

GeneID (NCBI):

1803

UNIPROT ID:

P27487

Full Name:

dipeptidyl-peptidase 4

Calculated MW:

88 kDa

Observed MW:

110 kDa

Purification Method:

Protein G purification

CloneNo.:

2G6D11

Recommended Dilutions:

WB 1:5000-1:50000

Applications

Tested Applications:

FC, WB, ELISA

Species Specificity:

Human, Pig, Rabbit

Positive Controls:

WB : human placenta tissue, HuH-7 cells, pig kidney tissue, rabbit kidney tissue

Background Information

CD26, also known as DPP4 (dipeptidyl peptidase-4), is a 110 kDa type II cell-surface glycoprotein widely expressed on T cells, activated B cells, activated NK cells and myeloid cells as well as on epithelial cells, fibroblasts, mesothelium, and endothelial cells of a variety of tissues (PMID:33777580; 26919392). It has ecto-enzyme activity in its extracellular domain and cleaves amino-terminal dipeptides with either L-proline or L-alanine at the penultimate position (PMID: 9553764). CD26 plays roles in diverse biological processes such as immunoregulation, glucose homeostasis, and tumorigenesis (PMID: 33777580).

Storage

Storage:

Store at -20°C. Stable for one year after shipment.

Storage Buffer:

PBS with 0.02% sodium azide and 50% glycerol pH 7.3.

Aliquoting is unnecessary for -20°C storage

For technical support and original validation data for this product please contact:

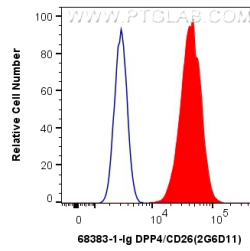
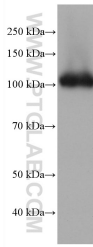
T: 4006900926

E: Proteintech-CN@ptglab.com

W: ptgcn.com

This product is exclusively available under Proteintech Group brand and is not available to purchase from any other manufacturer.

Selected Validation Data



human placenta tissue were subjected to SDS PAGE followed by western blot with 68383-1-Ig (DPP4/CD26 antibody) at dilution of 1:10000 incubated at room temperature for 1.5 hours.

1×10^6 HuH-7 cells were surface stained with 0.4 ug Anti-Human DPP4/CD26 (68383-1-Ig, Clone:2G6D11) and CoraLite®488-Conjugated AffiniPure Goat Anti-Mouse IgG(H+L) at dilution 1:1000 (red), or 0.4 ug Mouse IgG1 Isotype Control (MOPC-21) (65124-1-Ig, Clone: MOPC-21) (blue). Cells were not fixed.