

For Research Use Only

# Tuberin/TSC2 Monoclonal antibody, PBS Only

Catalog Number: 68380-1-PBS

Featured Product



## Basic Information

Catalog Number:

68380-1-PBS

Concentration:

1 mg/ml

Source:

Mouse

Isotype:

IgG1

GenBank Accession Number:

BC150300

GeneID (NCBI):

7249

UNIPROT ID:

P49815

Full Name:

tuberous sclerosis 2

Calculated MW:

1807 aa, 201 kDa

Observed MW:

200 kDa

Purification Method:

Protein G purification

CloneNo.:

1A10B2

## Applications

Tested Applications:

WB, IHC, IF/ICC, ELISA

Species Specificity:

human, mouse, rat

## Background Information

TSC2, also named Tuberin, plays an essential role in the cellular energy response pathway. TSC2 forms a physical and functional complex with TSC1 that can inhibit the nutrient-mediated or growth factor-stimulated phosphorylation of S6K1 and EIF4EBP1 by negatively regulating mTORC1 signaling.

## Storage

Storage:

Store at -80°C.

The product is shipped with ice packs. Upon receipt, store it immediately at -80°C

Storage Buffer:

PBS only, pH7.3

For technical support and original validation data for this product please contact:

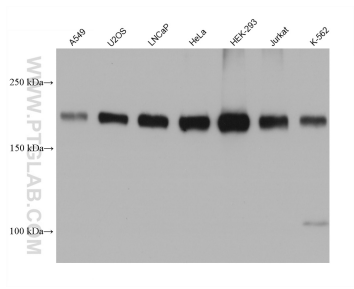
T: 4006900926

E: [Proteintech-CN@ptglab.com](mailto:Proteintech-CN@ptglab.com)

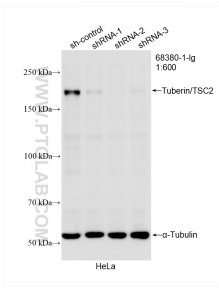
W: [ptgcn.com](http://ptgcn.com)

This product is exclusively available under Proteintech Group brand and is not available to purchase from any other manufacturer.

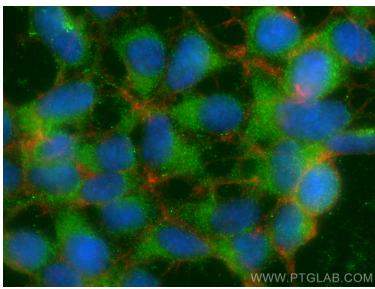
Selected Validation Data



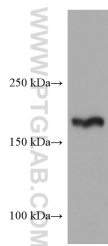
Various lysates were subjected to SDS PAGE followed by western blot with 68380-1-Ig (TSC2 antibody) at dilution of 1:5000 incubated at room temperature for 1.5 hours. This data was developed using the same antibody clone with 68380-1-PBS in a different storage buffer formulation.



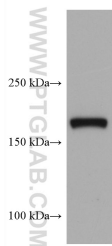
WB result of Tuberlin/TSC2 antibody (68380-1-Ig; 1:600; incubated at room temperature for 1.5 hours) with sh-Control and sh-Tuberin/TSC2 transfected HeLa cells. This data was developed using the same antibody clone with 68380-1-PBS in a different storage buffer formulation.



Immunofluorescent analysis of (-20°C Ethanol) fixed HEK-293 cells using TSC2 antibody (68380-1-Ig, Clone: 1A10B2 ) at dilution of 1:800 and CoraLite®488-Conjugated AffiniPure Goat Anti-Mouse IgG(H+L), CL594-Phalloidin (red). This data was developed using the same antibody clone with 68380-1-PBS in a different storage buffer formulation.



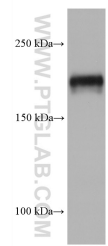
MCF-7 cells were subjected to SDS PAGE followed by western blot with 68380-1-Ig (TSC2 antibody) at dilution of 1:5000 incubated at room temperature for 1.5 hours. This data was developed using the same antibody clone with 68380-1-PBS in a different storage buffer formulation.



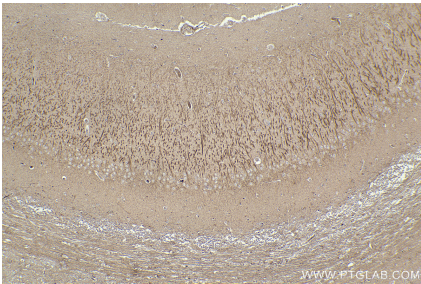
PC-3 cells were subjected to SDS PAGE followed by western blot with 68380-1-Ig (TSC2 antibody) at dilution of 1:5000 incubated at room temperature for 1.5 hours. This data was developed using the same antibody clone with 68380-1-PBS in a different storage buffer formulation.



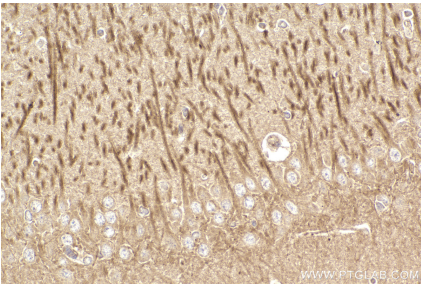
NIH/3T3 cells were subjected to SDS PAGE followed by western blot with 68380-1-Ig (TSC2 antibody) at dilution of 1:5000 incubated at room temperature for 1.5 hours. This data was developed using the same antibody clone with 68380-1-PBS in a different storage buffer formulation.



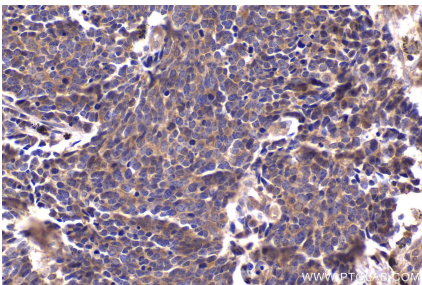
HSC-T6 cells were subjected to SDS PAGE followed by western blot with 68380-1-Ig (TSC2 antibody) at dilution of 1:5000 incubated at room temperature for 1.5 hours. This data was developed using the same antibody clone with 68380-1-PBS in a different storage buffer formulation.



Immunohistochemical analysis of paraffin-embedded rat brain tissue slide using 68380-1-Ig (Tuberlin/TSC2 antibody) at dilution of 1:200 (under 10x lens). Heat mediated antigen retrieval with Tris-EDTA buffer (pH 9.0). This data was developed using the same antibody clone with 68380-1-PBS in a different storage buffer formulation.



Immunohistochemical analysis of paraffin-embedded rat brain tissue slide using 68380-1-Ig (Tuberlin/TSC2 antibody) at dilution of 1:200 (under 40x lens). Heat mediated antigen retrieval with Tris-EDTA buffer (pH 9.0). This data was developed using the same antibody clone with 68380-1-PBS in a different storage buffer formulation.



Immunohistochemical analysis of paraffin-embedded human lung cancer tissue slide using 68380-1-Ig (Tuberin/TSC2 antibody) at dilution of 1:200 (under 40x lens). Heat mediated antigen retrieval with Tris-EDTA buffer (pH 9.0). This data was developed using the same antibody clone with 68380-1-PBS in a different storage buffer formulation.