

For Research Use Only

Tuberin/TSC2 Monoclonal antibody

Catalog Number: 68380-1-Ig

Featured Product



Basic Information

Catalog Number:

68380-1-Ig

Size:

1000 ug/ml

Source:

Mouse

Isotype:

IgG1

GenBank Accession Number:

BC150300

GeneID (NCBI):

7249

UNIPROT ID:

P49815

Full Name:

tuberous sclerosis 2

Calculated MW:

1807 aa, 201 kDa

Observed MW:

200 kDa

Purification Method:

Protein A purification

CloneNo.:

1A10B2

Recommended Dilutions:

WB 1:2000-1:10000

IHC 1:50-1:500

IF/ICC 1:400-1:1600

Applications

Tested Applications:

WB, IHC, IF/ICC, ELISA

Species Specificity:

human, mouse, rat

Note-IHC: suggested antigen retrieval with TE buffer pH 9.0; (*) Alternatively, antigen retrieval may be performed with citrate buffer pH 6.0

Positive Controls:

WB : A549 cells, MCF-7 cells, PC-3 cells, HSC-T6 cells, NIH/3T3 cells, HeLa cells, U2OS cells, LNCaP cells, HEK-293 cells, Jurkat cells, K-562 cells

IHC : rat brain tissue, human lung cancer tissue

IF/ICC : HEK-293 cells,

Background Information

TSC2, also named Tuberin, plays an essential role in the cellular energy response pathway. TSC2 forms a physical and functional complex with TSC1 that can inhibit the nutrient-mediated or growth factor-stimulated phosphorylation of S6K1 and EIF4EBP1 by negatively regulating mTORC1 signaling.

Storage

Storage:

Store at -20°C. Stable for one year after shipment.

Storage Buffer:

PBS with 0.02% sodium azide and 50% glycerol pH 7.3.

Aliquoting is unnecessary for -20°C storage

For technical support and original validation data for this product please contact:

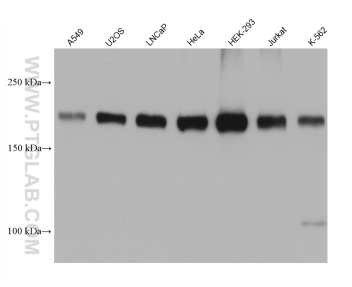
T: 4006900926

E: Proteintech-CN@ptglab.com

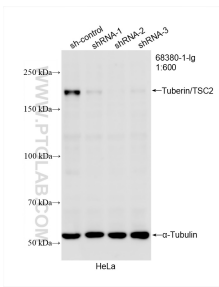
W: ptgcn.com

This product is exclusively available under Proteintech Group brand and is not available to purchase from any other manufacturer.

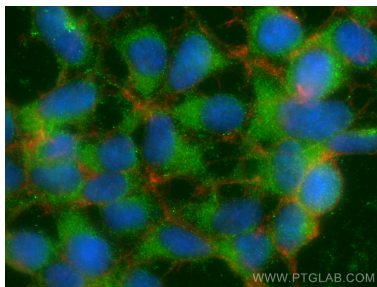
Selected Validation Data



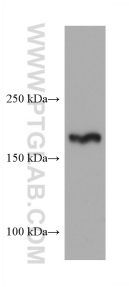
Various lysates were subjected to SDS PAGE followed by western blot with 68380-1-Ig (TSC2 antibody) at dilution of 1:5000 incubated at room temperature for 1.5 hours.



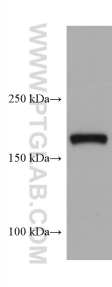
WB result of Tuberin/TSC2 antibody (68380-1-Ig; 1:600; incubated at room temperature for 1.5 hours) with sh-Control and sh-Tuberin/TSC2 transfected HeLa cells.



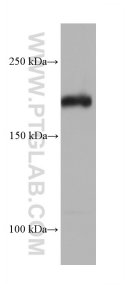
Immunofluorescent analysis of (-20°C Ethanol) fixed HEK-293 cells using TSC2 antibody (68380-1-Ig, Clone: 1A10B2) at dilution of 1:800 and CoraLite®488-Conjugated AffiniPure Goat Anti-Mouse IgG(H+L), CL594-Phalloidin (red).



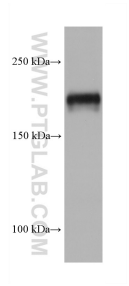
MCF-7 cells were subjected to SDS PAGE followed by western blot with 68380-1-Ig (TSC2 antibody) at dilution of 1:5000 incubated at room temperature for 1.5 hours.



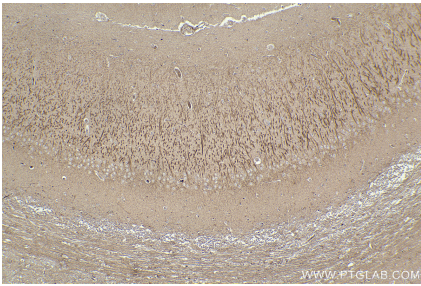
PC-3 cells were subjected to SDS PAGE followed by western blot with 68380-1-Ig (TSC2 antibody) at dilution of 1:5000 incubated at room temperature for 1.5 hours.



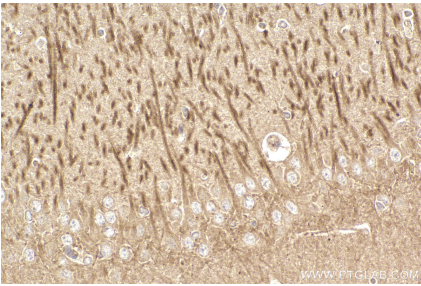
NIH/3T3 cells were subjected to SDS PAGE followed by western blot with 68380-1-Ig (TSC2 antibody) at dilution of 1:5000 incubated at room temperature for 1.5 hours.



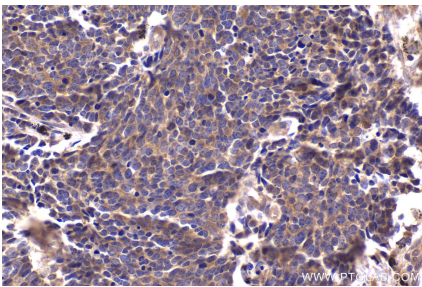
HSC-T6 cells were subjected to SDS PAGE followed by western blot with 68380-1-Ig (TSC2 antibody) at dilution of 1:5000 incubated at room temperature for 1.5 hours.



Immunohistochemical analysis of paraffin-embedded rat brain tissue slide using 68380-1-Ig (Tuberin/TSC2 antibody) at dilution of 1:200 (under 10x lens). Heat mediated antigen retrieval with Tris-EDTA buffer (pH 9.0).



Immunohistochemical analysis of paraffin-embedded rat brain tissue slide using 68380-1-Ig (Tuberin/TSC2 antibody) at dilution of 1:200 (under 40x lens). Heat mediated antigen retrieval with Tris-EDTA buffer (pH 9.0).



Immunohistochemical analysis of paraffin-embedded human lung cancer tissue slide using 68380-1-Ig (Tuberin/TSC2 antibody) at dilution of 1:200 (under 40x lens). Heat mediated antigen retrieval with Tris-EDTA buffer (pH 9.0).