

CREB3 Monoclonal antibody

Catalog Number: 68379-1-Ig

Basic Information

Catalog Number:

68379-1-Ig

Size:

1000 µg/ml

Source:

Mouse

Isotype:

IgG1

Immunogen Catalog Number:

AG1823

GenBank Accession Number:

BC009402

GeneID (NCBI):

10488

UNIPROT ID:

O43889

Full Name:

cAMP responsive element binding protein 3

Calculated MW:

44 kDa

Observed MW:

40-64 kDa

Purification Method:

Protein G purification

CloneNo.:

1C12H11

Recommended Dilutions:

WB 1:1000-1:6000

IF/ICC 1:400-1:1600

Applications

Tested Applications:

IF/ICC, WB, ELISA

Species Specificity:

Human

Positive Controls:

WB : HEK-293 cells, T-47D cells, HCT 116 cells, hTERT-RPE1 cells

IF/ICC : U2OS cells,

Background Information

CREB3, also named as LZIP and Luman, belongs to the bZIP family and ATF subfamily. It is a transcription factor activated upon intramembrane proteolysis (RIP), binds the cAMP response element (CRE) (consensus: 5'-GTGACGT[AG][AG]-3'), a sequence present in many viral and cellular promoters. CREB3 binds to and requires HCFC1 as a coactivator. The activity and expression are suppressed when the HCFC1-CREB3 complex binds with CREBZF. Participates in LKN-1/CCL15-induced chemotaxis signaling. CREB3 is N-glycosylated and released by proteolysis. So the MW of CREB3 emigrate 40kd to 64kd (PMID: 12138176).

Storage

Storage:

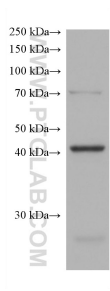
Store at -20°C. Stable for one year after shipment.

Storage Buffer:

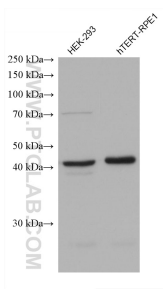
PBS with 0.02% sodium azide and 50% glycerol pH 7.3.

Aliquoting is unnecessary for -20°C storage

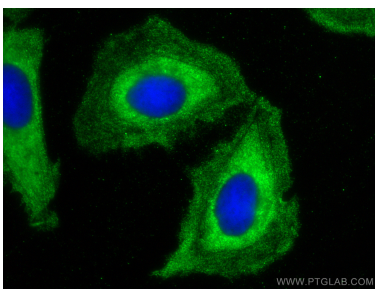
Selected Validation Data



HCT 116 cells were subjected to SDS PAGE followed by western blot with 68379-1-Ig (CREB3 antibody) at dilution of 1:3000 incubated at room temperature for 1.5 hours.



Various lysates were subjected to SDS PAGE followed by western blot with 68379-1-Ig (CREB3 antibody) at dilution of 1:3000 incubated at room temperature for 1.5 hours.



Immunofluorescent analysis of (-20°C Methanol) fixed U2OS cells using CREB3 antibody (68379-1-Ig, Clone: 1C12H11) at dilution of 1:800 and CoraLite®488-Conjugated AffiniPure Goat Anti-Mouse IgG(H+L).