

For Research Use Only

CEA/CD66e Monoclonal antibody

Catalog Number: 68377-1-Ig **1 Publications**



Basic Information

Catalog Number: 68377-1-Ig	GenBank Accession Number: BC034671	Purification Method: Protein G purification
Concentration: 1000 ug/ml	GeneID (NCBI): 1048	CloneNo.: 2B8H6
Source: Mouse	UNIPROT ID: P06731	Recommended Dilutions: WB: 1:5000-1:50000 IHC: 1:2500-1:10000
Isotype: IgG1	Full Name: carcinoembryonic antigen-related cell adhesion molecule 5	
Immunogen Catalog Number: EG0247	Calculated MW: 77 kDa	
	Observed MW: 180-200 kDa	

Applications

Tested Applications: WB, IHC, ELISA	Positive Controls:
Cited Applications: WB	WB : HaCaT cells, human saliva, HT-29 cells, human rectum tissue
Species Specificity: human	IHC : human colon cancer tissue, human lung tissue, human stomach cancer tissue
Cited Species: human	
Note-IHC: suggested antigen retrieval with TE buffer pH 9.0; (*) Alternatively, antigen retrieval may be performed with citrate buffer pH 6.0	

Background Information

Carcinoembryonic antigen (CEA), also known as CEACAM5 or CD66e, is a cell surface glycoprotein belonging to the immunoglobulin superfamily, mainly serving as a cell adhesion molecule mediating intercellular contact by both homophilic and heterophilic binding (PMID: 21731662). CEA inhibits anoikis and plays a role in tumorigenesis and metastasis. CEA has been found to be overexpressed in a wide variety of human cancers, including colon, breast, and lung (PMID: 17167768). CEA is a tumor marker and is routinely exploited for diagnosis.

Notable Publications

Author	Pubmed ID	Journal	Application
Yuqi Hu	40158720	Cancer Lett	WB

Storage

Storage:
Store at -20°C. Stable for one year after shipment.
Storage Buffer:
PBS with 0.02% sodium azide and 50% glycerol, pH7.3
Aliquoting is unnecessary for -20°C storage

For technical support and original validation data for this product please contact:

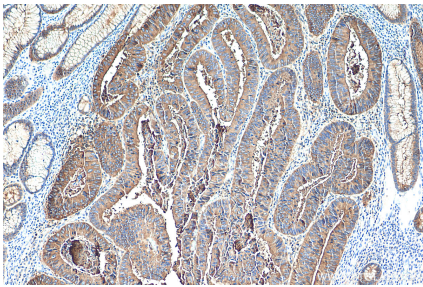
T: 4006900926

E: Proteintech-CN@ptglab.com

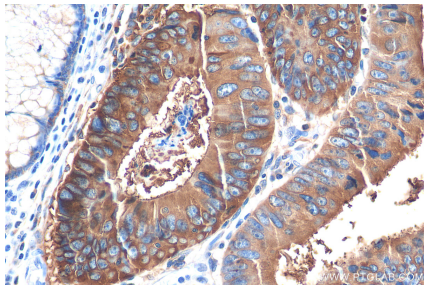
W: ptgcn.com

This product is exclusively available under Proteintech Group brand and is not available to purchase from any other manufacturer.

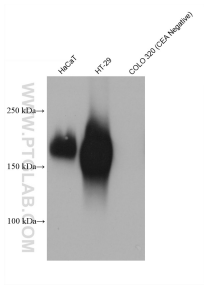
Selected Validation Data



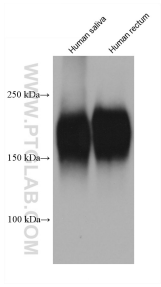
Immunohistochemical analysis of paraffin-embedded human colon cancer tissue slide using 68377-1-Ig (CEACAM5 antibody) at dilution of 1:5000 (under 10x lens). Heat mediated antigen retrieval with Tris-EDTA buffer (pH 9.0).



Immunohistochemical analysis of paraffin-embedded human colon cancer tissue slide using 68377-1-Ig (CEACAM5 antibody) at dilution of 1:5000 (under 40x lens). Heat mediated antigen retrieval with Tris-EDTA buffer (pH 9.0).



Various lysates were subjected to SDS PAGE followed by western blot with 68377-1-Ig (CEA antibody) at dilution of 1:10000 incubated at room temperature for 1.5 hours.



Various lysates were subjected to SDS PAGE followed by western blot with 68377-1-Ig (CEA antibody) at dilution of 1:10000 incubated at room temperature for 1.5 hours.