

For Research Use Only

# DSP Monoclonal antibody

Catalog Number: 68364-1-Ig



## Basic Information

<b>Catalog Number:</b> 68364-1-Ig	<b>GenBank Accession Number:</b> BC140802	<b>Purification Method:</b> Protein G purification
<b>Size:</b> 1000 µg/ml	<b>GeneID (NCBI):</b> 1832	<b>CloneNo.:</b> 1B10D4
<b>Source:</b> Mouse	<b>UNIPROT ID:</b> P15924	<b>Recommended Dilutions:</b> WB 1:5000-1:50000 IHC 1:1000-1:4000 IF 1:500-1:2000
<b>Isotype:</b> IgG1	<b>Full Name:</b> desmoplakin	
<b>Immunogen Catalog Number:</b> AG30499	<b>Calculated MW:</b> 2871 aa, 332 kDa	
	<b>Observed MW:</b> 240-330 kDa	

## Applications

**Tested Applications:**  
IF/ICC, IHC, WB, ELISA

**Species Specificity:**  
Human, mouse

**Note-IHC: suggested antigen retrieval with TE buffer pH 9.0; (\*) Alternatively, antigen retrieval may be performed with citrate buffer pH 6.0**

**Positive Controls:**

**WB:** HepG2 cells, HeLa cells, A431 cells, MCF-7 cells, HEK-293 cells

**IHC:** mouse heart tissue,

**IF:** A431 cells,

## Background Information

The desmoplakin (DP) is the most abundant desmosomal proteins and is located at the cytoplasmic portion of the desmosomes which are specialized cell-cell adhesion structures abundant in tissues such as muscle and epidermis that are subjected to mechanical stress. Desmoplakin 1 and 2 (DP 1 and 2) are two splice variants sharing common C-terminal and N-terminal globular head and tail domains, but differ in the length of the rod domain that links them. This antibody detects both DP1 (280-330 kDa) and DP2 (240-260 kDa). (PMID: 16467215, 11781569)

## Storage

**Storage:**

Store at -20°C. Stable for one year after shipment.

**Storage Buffer:**

PBS with 0.02% sodium azide and 50% glycerol pH 7.3.

Aliquoting is unnecessary for -20°C storage

For technical support and original validation data for this product please contact:

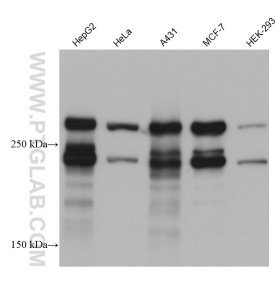
T: 4006900926

E: Proteintech-CN@ptglab.com

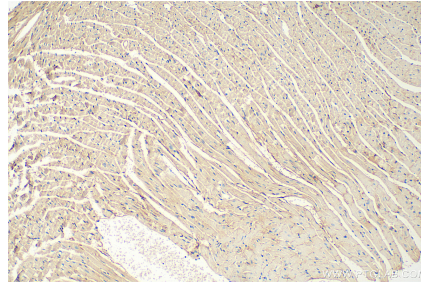
W: ptgcn.com

**This product is exclusively available under Proteintech Group brand and is not available to purchase from any other manufacturer.**

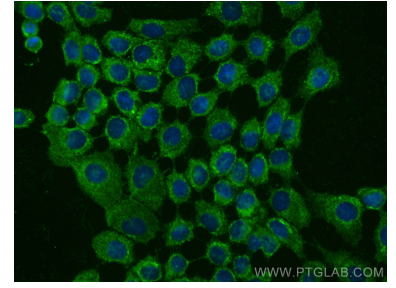
## Selected Validation Data



Various lysates were subjected to SDS PAGE followed by western blot with 68364-1-Ig (DSP antibody) at dilution of 1:10000 incubated at room temperature for 1.5 hours.



Immunohistochemical analysis of paraffin-embedded mouse heart tissue slide using 68364-1-Ig (DSP antibody) at dilution of 1:2000 (under 10x lens). Heat mediated antigen retrieval with Tris-EDTA buffer (pH 9.0).



Immunofluorescent analysis of (-20°C Methanol) fixed A431 cells using DSP antibody (68364-1-Ig, Clone: 1B10D4) at dilution of 1:1000 and CoraLite®488-Conjugated AffiniPure Goat Anti-Mouse IgG(H+L).