

For Research Use Only

MCTS1 Monoclonal antibody, PBS Only

Catalog Number: 68360-1-PBS



Basic Information

Catalog Number:

68360-1-PBS

Size:

1mg/ml

Source:

Mouse

Isotype:

IgG1

Immunogen Catalog Number:

AG7057

GenBank Accession Number:

BC001013

GeneID (NCBI):

28985

UNIPROT ID:

Q9ULC4

Full Name:

malignant T cell amplified sequence

1

Calculated MW:

21 kDa

Observed MW:

19 kDa

Purification Method:

Protein G purification

CloneNo.:

1F10C7

Applications

Tested Applications:

WB, IF/ICC, Indirect ELISA

Species Specificity:

human

Background Information

MCTS1 is an anti-oncogene that plays a role in cell cycle regulation. It can reduce cell doubling time and anchor-dependent growth. The G1 transition time and the duration of the G1 / S transition are shortened. It can also promote the release of deacylated tRNA and mRNA from recycled 40S subunits following ABCE1-mediated dissociation of post-termination ribosomal complexes into subunits (PMID: 10440924).

Storage

Storage:

Store at -80°C.

The product is shipped with ice packs. Upon receipt, store it immediately at -80°C

Storage Buffer:

PBS Only

For technical support and original validation data for this product please contact:

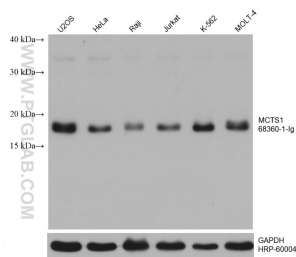
T: 4006900926

E: Proteintech-CN@ptglab.com

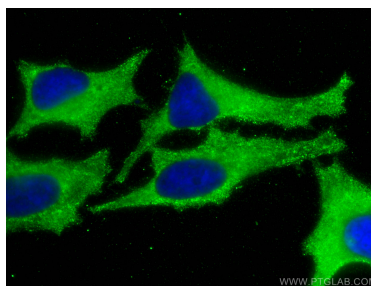
W: ptgcn.com

This product is exclusively available under Proteintech Group brand and is not available to purchase from any other manufacturer.

Selected Validation Data



Various lysates were subjected to SDS PAGE followed by western blot with 68360-1-Ig (MCTS1 antibody) at dilution of 1:5000 incubated at room temperature for 1.5 hours. The membrane was stripped and reblotted with HRP-conjugated GAPDH Monoclonal antibody (HRP-60004) as loading control. This data was developed using the same antibody clone with 68360-1-PBS in a different storage buffer formulation.



Immunofluorescent analysis of (-20°C Methanol) fixed HeLa cells using MCTS1 antibody (68360-1-Ig, Clone: 1F10C7) at dilution of 1:800 and CoraLite®488-Conjugated AffiniPure Goat Anti-Mouse IgG(H+L). This data was developed using the same antibody clone with 68360-1-PBS in a different storage buffer formulation.