

# AP2B1 Monoclonal antibody, PBS Only

Catalog Number: 68349-1-PBS

## Basic Information

<b>Catalog Number:</b> 68349-1-PBS	<b>GenBank Accession Number:</b> BC006201	<b>Purification Method:</b> Protein A purification
<b>Size:</b> 1 mg/ml	<b>GeneID (NCBI):</b> 163	<b>CloneNo.:</b> 1A3B6
<b>Source:</b> Mouse	<b>UNIPROT ID:</b> P63010	
<b>Isotype:</b> IgG2a	<b>Full Name:</b> adaptor-related protein complex 2, beta 1 subunit	
<b>Immunogen Catalog Number:</b> AG8264	<b>Calculated MW:</b> 105 kDa	
	<b>Observed MW:</b> 100-115 kDa	

## Applications

**Tested Applications:**  
WB, Indirect ELISA, IHC, IF

**Species Specificity:**  
Human, Mouse, Rat, Rabbit, Pig

## Background Information

AP2B1 is a component of the adaptor protein complex 2 (AP-2). AP complexes are cytosolic heterotetramers that mediate the sorting of membrane proteins in the secretory and endocytic pathways. AP complexes are involved in the formation of clathrin-coated vesicles (CCVs) by recruiting the scaffold protein, clathrin. AP complexes also play a pivotal role in the cargo selection by recognizing the sorting signals within the cytoplasmic tail of integral membrane proteins. AP-2 works on the plasma membrane to internalize cargo in clathrin-mediated endocytosis.

## Storage

**Storage:**  
Store at -80°C.  
**The product is shipped with ice packs. Upon receipt, store it immediately at -80°C**

**Storage Buffer:**  
PBS Only

For technical support and original validation data for this product please contact:

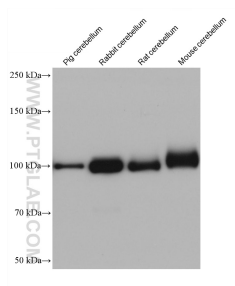
T: 4006900926

E: [Proteintech-CN@ptglab.com](mailto:Proteintech-CN@ptglab.com)

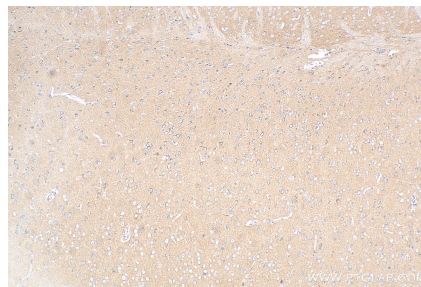
W: [ptgcn.com](http://ptgcn.com)

**This product is exclusively available under Proteintech Group brand and is not available to purchase from any other manufacturer.**

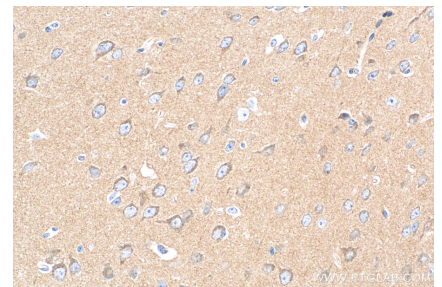
## Selected Validation Data



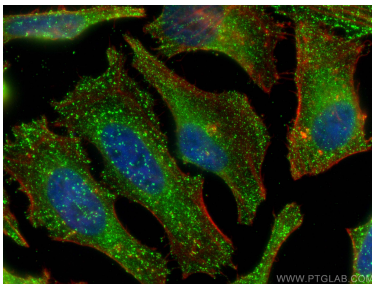
Various lysates were subjected to SDS PAGE followed by western blot with 68349-1-Ig (AP2B1 antibody) at dilution of 1:10000 incubated at room temperature for 1.5 hours. This data was developed using the same antibody clone with 68349-1-PBS in a different storage buffer formulation.



Immunohistochemical analysis of paraffin-embedded rat brain tissue slide using 68349-1-Ig (AP2B1 antibody) at dilution of 1:1000 (under 10x lens). Heat mediated antigen retrieval with Tris-EDTA buffer (pH 9.0). This data was developed using the same antibody clone with 68349-1-PBS in a different storage buffer formulation.



Immunohistochemical analysis of paraffin-embedded rat brain tissue slide using 68349-1-Ig (AP2B1 antibody) at dilution of 1:1000 (under 40x lens). Heat mediated antigen retrieval with Tris-EDTA buffer (pH 9.0). This data was developed using the same antibody clone with 68349-1-PBS in a different storage buffer formulation.



Immunofluorescent analysis of (4% PFA) fixed HeLa cells using AP2B1 antibody (68349-1-Ig, Clone: 1A3B6) at dilution of 1:2000 and CoraLite®488-Conjugated AffiniPure Goat Anti-Mouse IgG(H+L). This data was developed using the same antibody clone with 68349-1-PBS in a different storage buffer formulation.