

For Research Use Only

CCS Monoclonal antibody

Catalog Number: 68341-1-Ig

Featured Product



Basic Information

Catalog Number:

68341-1-Ig

Size:

1000 μ g/ml

Source:

Mouse

Isotype:

IgG2a

Immunogen Catalog Number:

AG18860

GenBank Accession Number:

BC105016

GeneID (NCBI):

9973

UNIPROT ID:

O14618

Full Name:

copper chaperone for superoxide dismutase

Calculated MW:

274 aa, 29 kDa

Observed MW:

32 kDa

Purification Method:

Protein A purification

CloneNo.:

3F5E5

Recommended Dilutions:

WB 1:5000-1:50000

IHC 1:50-1:500

IF/ICC 1:500-1:2000

Applications

Tested Applications:

IF/ICC, IHC, WB, ELISA

Species Specificity:

Human, mouse, rat

Note-IHC: suggested antigen retrieval with TE buffer pH 9.0; (*) Alternatively, antigen retrieval may be performed with citrate buffer pH 6.0

Positive Controls:

WB : LNCaP cells, HepG2 cells, A549 cells

IHC : mouse brain tissue,

IF/ICC : HepG2 cells,

Background Information

Copper chaperone for superoxide dismutase (CCS) is a soluble factor that converts copper into copper-zinc superoxide dismutase (SOD1). CCS and SOD1 interact directly in vivo and in vitro, and this interaction is mediated by homologous domains in each protein. CCS not only interacts with wild-type SOD1 but also interacts with SOD1 containing common missense mutations, resulting in FALS.

Storage

Storage:

Store at -20°C. Stable for one year after shipment.

Storage Buffer:

PBS with 0.02% sodium azide and 50% glycerol pH 7.3.

Aliquoting is unnecessary for -20°C storage

For technical support and original validation data for this product please contact:

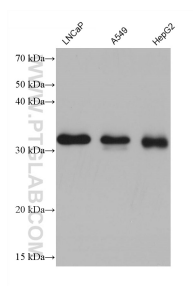
T: 4006900926

E: Proteintech-CN@ptglab.com

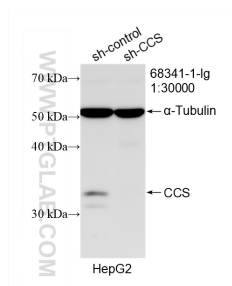
W: ptgcn.com

This product is exclusively available under Proteintech Group brand and is not available to purchase from any other manufacturer.

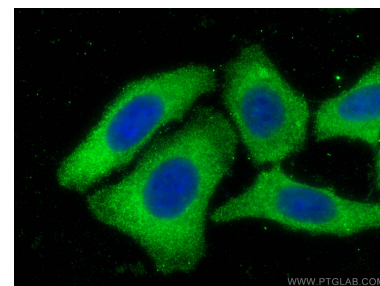
Selected Validation Data



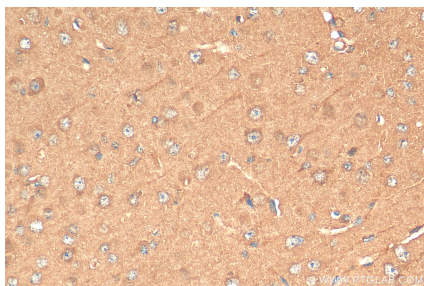
Various lysates were subjected to SDS PAGE followed by western blot with 68341-1-Ig (CCS antibody) at dilution of 1:10000 incubated at room temperature for 1.5 hours.



WB result of CCS antibody (68341-1-Ig; 1:30000; incubated at room temperature for 1.5 hours) with sh-Control and sh-CCS transfected HepG2 cells.



Immunofluorescent analysis of (-20°C Methanol) fixed HepG2 cells using CCS antibody (68341-1-Ig, Clone: 3F5E5) at dilution of 1:1000 and CoraLite®488-Conjugated AffiniPure Goat Anti-Mouse IgG(H+L).



Immunohistochemical analysis of paraffin-embedded mouse brain tissue slide using 68341-1-Ig (CCS antibody) at dilution of 1:200 (under 40x lens). Heat mediated antigen retrieval with Tris-EDTA buffer (pH 9.0).