

For Research Use Only

ALAS2 Monoclonal antibody, PBS Only (Capture)

Catalog Number: 68332-1-PBS



Basic Information

Catalog Number: 68332-1-PBS	GenBank Accession Number: BC030230	Purification Method: Protein G purification
Size: 1mg/ml	GeneID (NCBI): 212	CloneNo.: 2C1H1
Source: Mouse	UNIPROT ID: P22557	
Isotype: IgG1	Full Name: aminolevulinate, delta-, synthase 2	
Immunogen Catalog Number: AG13524	Calculated MW: 587 aa, 65 kDa	
	Observed MW: 60-65 kDa	

Applications

Tested Applications:
WB, Cytometric bead array, Indirect ELISA

Species Specificity:
human

Background Information

The heme biosynthetic pathway begins from delta aminolevulinic acid synthase (ALAS) catalyzing the condensation of glycine and succinyl-CoA to delta aminolevulinic acid (ALA) in the mitochondria. ALAS is coded by two genes: ALAS1 and ALAS2. ALAS1 is ubiquitously expressed in all cells, and the negative feedback is regulated by the heme pool; however, ALAS2 is specifically expressed only in erythroid cells.

Storage

Storage:
Store at -80°C.
The product is shipped with ice packs. Upon receipt, store it immediately at -80°C

Storage Buffer:
PBS Only

For technical support and original validation data for this product please contact:

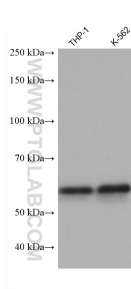
T: 4006900926

E: Proteintech-CN@ptglab.com

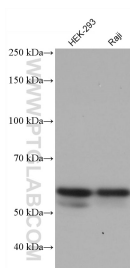
W: ptgcn.com

This product is exclusively available under Proteintech Group brand and is not available to purchase from any other manufacturer.

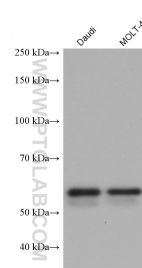
Selected Validation Data



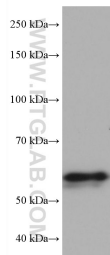
Various lysates were subjected to SDS PAGE followed by western blot with 68332-1-Ig (ALAS2 antibody) at dilution of 1:10000 incubated at room temperature for 1.5 hours. This data was developed using the same antibody clone with 68332-1-PBS in a different storage buffer formulation.



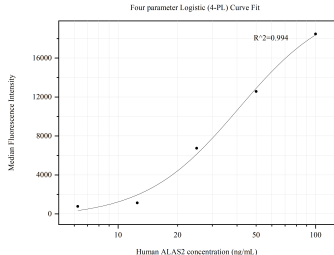
Various lysates were subjected to SDS PAGE followed by western blot with 68332-1-Ig (ALAS2 antibody) at dilution of 1:10000 incubated at room temperature for 1.5 hours. This data was developed using the same antibody clone with 68332-1-PBS in a different storage buffer formulation.



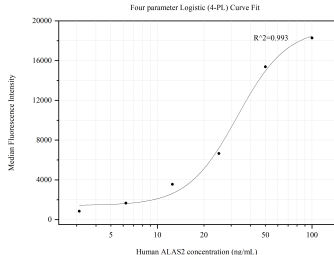
Various lysates were subjected to SDS PAGE followed by western blot with 68332-1-Ig (ALAS2 antibody) at dilution of 1:10000 incubated at room temperature for 1.5 hours. This data was developed using the same antibody clone with 68332-1-PBS in a different storage buffer formulation.



NK-92 cells were subjected to SDS PAGE followed by western blot with 68332-1-Ig (ALAS2 antibody) at dilution of 1:10000 incubated at room temperature for 1.5 hours. This data was developed using the same antibody clone with 68332-1-PBS in a different storage buffer formulation.



Cytometric bead array standard curve of MP50624-1, ALAS2 Monoclonal Matched Antibody Pair, PBS Only. Capture antibody: 68332-1-PBS. Detection antibody: 68332-2-PBS. Standard:Ag13524. Range: 6.25-100 ng/mL.



Cytometric bead array standard curve of MP50624-2, ALAS2 Monoclonal Matched Antibody Pair, PBS Only. Capture antibody: 68332-1-PBS. Detection antibody: 68332-3-PBS. Standard:Ag13524. Range: 3.125-100 ng/mL.