

For Research Use Only

# EPS8L2 Monoclonal antibody

Catalog Number: 68330-1-Ig **Featured Product**



## Basic Information

<b>Catalog Number:</b> 68330-1-Ig	<b>GenBank Accession Number:</b> BC002474	<b>Purification Method:</b> Protein A purification
<b>Size:</b> 1000 µg/ml	<b>GeneID (NCBI):</b> 64787	<b>CloneNo.:</b> 2E3B1
<b>Source:</b> Mouse	<b>UNIPROT ID:</b> Q9H6S3	<b>Recommended Dilutions:</b> WB 1:5000-1:50000 IF 1:250-1:1000
<b>Isotype:</b> IgG1	<b>Full Name:</b> EPS8-like 2	
<b>Immunogen Catalog Number:</b> AG16808	<b>Calculated MW:</b> 715 aa, 81 kDa	
	<b>Observed MW:</b> 81-85 kDa	

## Applications

<b>Tested Applications:</b> IF/ICC, WB, ELISA	<b>Positive Controls:</b>
<b>Species Specificity:</b> Human, Mouse, Rat	<b>WB :</b> rat skin tissue, A431 cells, HepG2 cells, A549 cells, LNCaP cells, HeLa cells, HepG2 cells, mouse skin tissue
	<b>IF :</b> HeLa cells,

## Background Information

EPS8L2 (epidermal growth factor receptor pathway substrate 8 L2), a member of the Eps8-like protein family, is a newly identified hair bundle protein that is localized at the tips of stereocilia of both cochlear and vestibular hair cells.

## Storage

**Storage:**  
Store at -20°C. Stable for one year after shipment.  
**Storage Buffer:**  
PBS with 0.02% sodium azide and 50% glycerol pH 7.3.  
**Aliquoting is unnecessary for -20°C storage**

For technical support and original validation data for this product please contact:

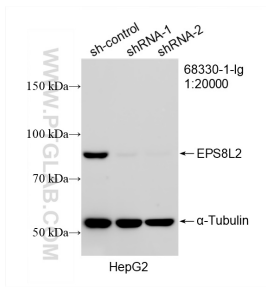
T: 4006900926

E: [Proteintech-CN@ptglab.com](mailto:Proteintech-CN@ptglab.com)

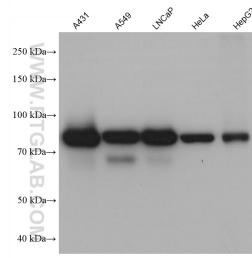
W: [ptgcn.com](http://ptgcn.com)

**This product is exclusively available under Proteintech Group brand and is not available to purchase from any other manufacturer.**

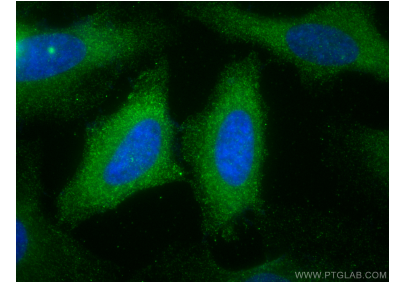
## Selected Validation Data



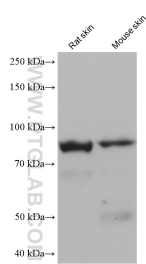
WB result of EPS8L2 antibody (68330-1-Ig; 1:20000; incubated at room temperature for 1.5 hours) with sh-Control and sh-EPS8L2 transfected HepG2 cells.



A431 cells were subjected to SDS PAGE followed by western blot with 68330-1-Ig (EPS8L2 antibody) at dilution of 1:10000 incubated at room temperature for 1.5 hours.



Immunofluorescent analysis of (-20°C Methanol) fixed HeLa cells using EPS8L2 antibody (68330-1-Ig, Clone: 2E3B1 ) at dilution of 1:500 and CoraLite@488-Conjugated AffiniPure Goat Anti-Mouse IgG(H+L).



rat skin tissue were subjected to SDS PAGE followed by western blot with 68330-1-Ig (EPS8L2 antibody) at dilution of 1:10000 incubated at room temperature for 1.5 hours.