

For Research Use Only

# AZI2 Monoclonal antibody

Catalog Number: 68326-1-Ig



## Basic Information

<b>Catalog Number:</b> 68326-1-Ig	<b>GenBank Accession Number:</b> BC001139	<b>Purification Method:</b> Protein G purification
<b>Size:</b> 1000 µg/ml	<b>GeneID (NCBI):</b> 64343	<b>CloneNo.:</b> 2F1G5
<b>Source:</b> Mouse	<b>UNIPROT ID:</b> Q9H6S1	<b>Recommended Dilutions:</b> WB 1:5000-1:50000 IF/ICC 1:500-1:2000
<b>Isotype:</b> IgG1	<b>Full Name:</b> 5-azacytidine induced 2	
<b>Immunogen Catalog Number:</b> AG6755	<b>Calculated MW:</b> 45 kDa	
	<b>Observed MW:</b> 45 kDa	

## Applications

<b>Tested Applications:</b> IF/ICC, WB, ELISA	<b>Positive Controls:</b>
<b>Species Specificity:</b> Human, mouse, rat	<b>WB :</b> U2OS cells, MDA-MB-231 cells, SK-BR-3 cells, LNCaP cells, HeLa cells, HEK-293 cells, K-562 cells, HSC-T6 cells, 4T1 cells
	<b>IF/ICC :</b> HeLa cells,

## Background Information

AZI2, also known as NAP1, is a TNF receptor (TNFR)-associated factor family member-associated NF-κB activator-binding kinase 1-binding protein that regulates the production of IFNs. It is an adapter protein which binds TBK1 and IKKBE playing a role in antiviral innate immunity. NAP1 is a kind of adapter protein which binds TBK1 and IKKBE playing a role in antiviral innate immunity. (PMID: 21931631)

## Storage

**Storage:**  
Store at -20°C. Stable for one year after shipment.  
**Storage Buffer:**  
PBS with 0.02% sodium azide and 50% glycerol pH 7.3.  
Aliquoting is unnecessary for -20°C storage

For technical support and original validation data for this product please contact:

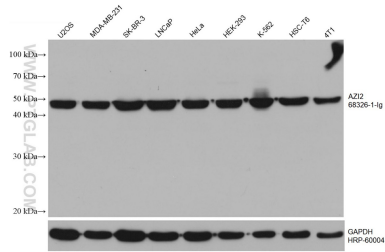
T: 4006900926

E: Proteintech-CN@ptglab.com

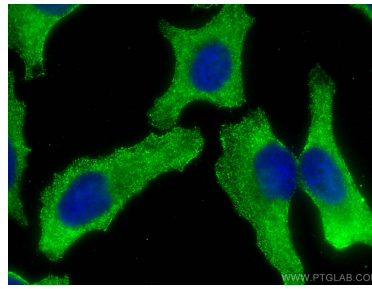
W: ptgcn.com

This product is exclusively available under Proteintech Group brand and is not available to purchase from any other manufacturer.

## Selected Validation Data



Various lysates were subjected to SDS PAGE followed by western blot with 68326-1-Ig (AZI2 antibody) at dilution of 1:10000 incubated at room temperature for 1.5 hours. The membrane was stripped and reblotted with HRP-conjugated GAPDH Monoclonal antibody (HRP-60004) as loading control.



Immunofluorescent analysis of (-20°C Methanol) fixed HeLa cells using AZI2 antibody (68326-1-Ig, Clone: 2F1G5) at dilution of 1:1000 and CoraLite®488-Conjugated AffiniPure Goat Anti-Mouse IgG(H+L).