

LRRC8C Monoclonal antibody, PBS Only

Catalog Number: **68323-1-PBS**

Basic Information

Catalog Number: 68323-1-PBS	GenBank Accession Number: BC113973	Purification Method: Protein A purification
Size: 1mg/ml	GeneID (NCBI): 84230	CloneNo.: 4A6A4
Source: Mouse	UNIPROT ID: Q8TDW0	
Isotype: IgG2b	Full Name: leucine rich repeat containing 8 family, member C	
Immunogen Catalog Number: AG17001	Calculated MW: 803 aa, 92 kDa	
	Observed MW: 105 kDa	

Applications

Tested Applications:
WB, IF, Indirect ELISA

Species Specificity:
Human

Background Information

LRRC8C (Leucine-rich repeat-containing protein 8C), also known as AD158, is a non-essential component of the volume-regulated anion channel (VRAC, also known as VSOAC channel), which is required to maintain a constant cell volume in response to extracellular or intracellular permeability changes. The VRAC channel conducts iodide better than chloride and can also conduct organic osmolytes like taurine. The VRAC channel also mediates transport of immunoreactive cyclic dinucleotide GMP-AMP (2'-3'-cGAMP), an immune messenger produced in response to DNA virus in the cytosol (PMID:24790029; 26824658; 28193731).

Storage

Storage:
Store at **-80°C**.
The product is shipped with ice packs. Upon receipt, store it immediately at -80°C

Storage Buffer:
PBS Only

For technical support and original validation data for this product please contact:

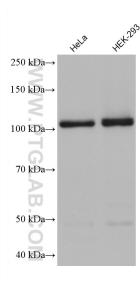
T: 4006900926

E: Proteintech-CN@ptglab.com

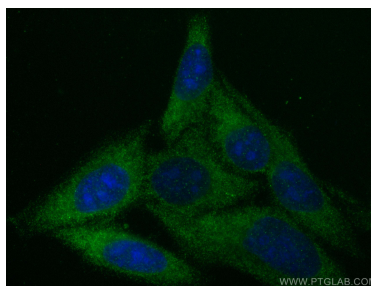
W: ptgcn.com

This product is exclusively available under Proteintech Group brand and is not available to purchase from any other manufacturer.

Selected Validation Data



Various lysates were subjected to SDS PAGE followed by western blot with 68323-1-Ig (LRRC8C antibody) at dilution of 1:5000 incubated at room temperature for 1.5 hours. This data was developed using the same antibody clone with 68323-1-PBS in a different storage buffer formulation.



Immunofluorescent analysis of (-20°C Ethanol) fixed HepG2 cells using LRRC8C antibody (68323-1-Ig, Clone: 4A6A4) at dilution of 1:400 and CoraLite®488-Conjugated AffiniPure Goat Anti-Mouse IgG(H+L) (SA00013-1). This data was developed using the same antibody clone with 68323-1-PBS in a different storage buffer formulation.