

For Research Use Only

NAB2 Monoclonal antibody

Catalog Number: 68322-1-Ig



Basic Information

Catalog Number:

68322-1-Ig

Size:

1000 µg/ml

Source:

Mouse

Isotype:

IgG2b

Immunogen Catalog Number:

AG6346

GenBank Accession Number:

BC065931

GeneID (NCBI):

4665

UNIPROT ID:

Q15742

Full Name:

NGFI-A binding protein 2 (EGR1 binding protein 2)

Calculated MW:

57 kDa

Observed MW:

57 kDa

Purification Method:

Protein A purification

CloneNo.:

1F1E2

Recommended Dilutions:

WB 1:5000-1:50000

Applications

Tested Applications:

WB, ELISA

Species Specificity:

Human, Mouse, Rat

Positive Controls:

WB : HEK-293 cells, U2OS cells, HSC-T6 cells, NIH/3T3 cells, HeLa cells, A2780 cells, A375 cells, MCF-7 cells

Background Information

NGFI-A-Binding protein 2 (NAB2) is a member of the poly(A)-binding protein (PABP) family in *S. cerevisiae* and emerged as a key component in the tightly intertwined system of poly(A) tail length control, mRNP formation, and export of mature mRNPs.

Storage

Storage:

Store at -20°C. Stable for one year after shipment.

Storage Buffer:

PBS with 0.02% sodium azide and 50% glycerol pH 7.3.

Aliquoting is unnecessary for -20°C storage

For technical support and original validation data for this product please contact:

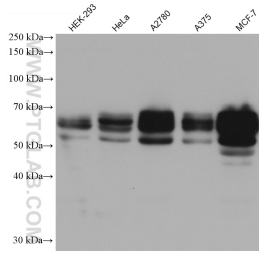
T: 4006900926

E: Proteintech-CN@ptglab.com

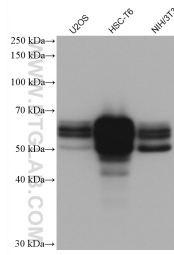
W: ptgcn.com

This product is exclusively available under Proteintech Group brand and is not available to purchase from any other manufacturer.

Selected Validation Data



Various lysates were subjected to SDS PAGE followed by western blot with 68322-1-Ig (NAB2 antibody) at dilution of 1:20000 incubated at room temperature for 1.5 hours.



Various lysates were subjected to SDS PAGE followed by western blot with 68322-1-Ig (NAB2 antibody) at dilution of 1:20000 incubated at room temperature for 1.5 hours.