

For Research Use Only

# Collagen Type III Monoclonal antibody

Catalog Number: 68320-1-Ig

10 Publications



## Basic Information

Catalog Number:

68320-1-Ig

Concentration:

1000 ug/ml

Source:

Mouse

Isotype:

IgG1

Immunogen Catalog Number:

AG4229

GenBank Accession Number:

BC028178

GeneID (NCBI):

1281

UNIPROT ID:

P02461

Full Name:

collagen, type III, alpha 1

Calculated MW:

1466 aa, 139 kDa

Observed MW:

130 kDa

Purification Method:

Protein G purification

CloneNo.:

3B1F3

Recommended Dilutions:

WB 1:5000-1:50000

IHC 1:1000-1:4000

## Applications

Tested Applications:

WB, IHC, ELISA

Cited Applications:

WB, IHC, IF

Species Specificity:

human, mouse, rat, pig, rabbit

Cited Species:

human, mouse, rat

**Note-IHC: suggested antigen retrieval with TE buffer pH 9.0; (\*) Alternatively, antigen retrieval may be performed with citrate buffer pH 6.0**

Positive Controls:

**WB**: pig colon tissue, human placenta tissue, human rectum tissue, rabbit large intestine tissue, rat colon tissue

**IHC**: human ovary tumor tissue, human hepatocirrhosis tissue, human placenta tissue, mouse skin tissue

## Background Information

Type III collagen is a fibrillar-forming collagen comprising three  $\alpha 1(\text{III})$  chains and is expressed in early embryos and throughout embryogenesis (PMID: 9050868). In the adult, type III collagen is a major component of the extracellular matrix in a variety of internal organs and skin. It occurs in most soft connective tissues along with type I collagen (PMID: 2445760). COL3A1 gene encodes type III procollagen. Mutations in this gene are associated with Ehlers-Danlos syndrome type IV, and with aortic and arterial aneurysms (PMID: 10706896; 2243125; 18389341).

## Notable Publications

Author	Pubmed ID	Journal	Application
Yunxian Dong	39407227	J Nanobiotechnology	IHC
Xuelian Yang	39129313	Int J Mol Med	WB
Qianqian Xu	39068752	Int Immunopharmacol	IHC

## Storage

Storage:

Store at -20°C. Stable for one year after shipment.

Storage Buffer:

PBS with 0.02% sodium azide and 50% glycerol

Aliquoting is unnecessary for -20°C storage

For technical support and original validation data for this product please contact:

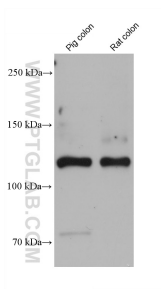
T: 4006900926

E: [Proteintech-CN@ptglab.com](mailto:Proteintech-CN@ptglab.com)

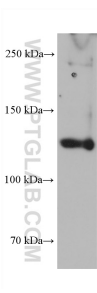
W: [ptgcn.com](http://ptgcn.com)

**This product is exclusively available under Proteintech Group brand and is not available to purchase from any other manufacturer.**

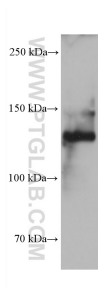
Selected Validation Data



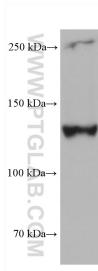
Various lysates were subjected to SDS PAGE followed by western blot with 68320-1-Ig (COL3A1 antibody) at dilution of 1:10000 incubated at room temperature for 1.5 hours.



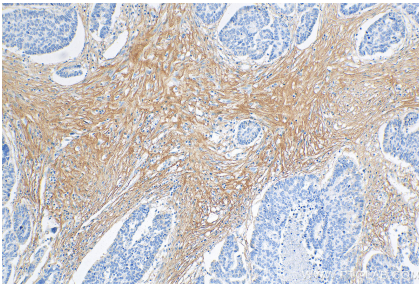
human placenta tissue were subjected to SDS PAGE followed by western blot with 68320-1-Ig (COL3A1 antibody) at dilution of 1:10000 incubated at room temperature for 1.5 hours.



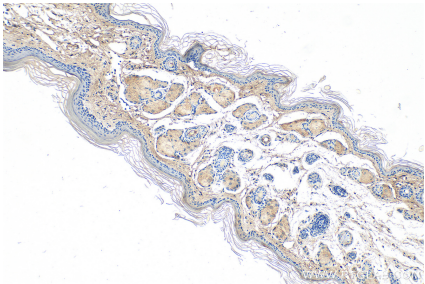
human rectum tissue were subjected to SDS PAGE followed by western blot with 68320-1-Ig (COL3A1 antibody) at dilution of 1:10000 incubated at room temperature for 1.5 hours.



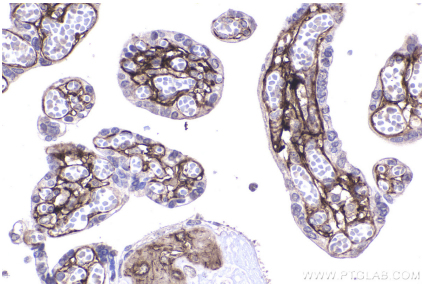
rabbit large intestine tissue were subjected to SDS PAGE followed by western blot with 68320-1-Ig (COL3A1 antibody) at dilution of 1:10000 incubated at room temperature for 1.5 hours.



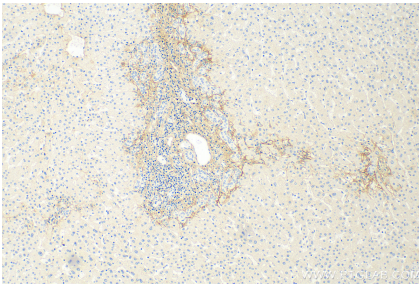
Immunohistochemical analysis of paraffin-embedded human ovary tumor tissue slide using 68320-1-Ig (COL3A1 antibody) at dilution of 1:2000 (under 10x lens). Heat mediated antigen retrieval with Tris-EDTA buffer (pH 9.0).



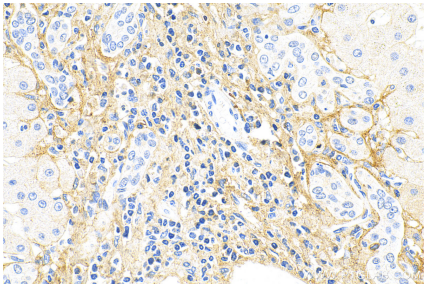
Immunohistochemical analysis of paraffin-embedded mouse skin tissue slide using 68320-1-Ig (COL3A1 antibody) at dilution of 1:1000 (under 10x lens). Heat mediated antigen retrieval with Tris-EDTA buffer (pH 9.0).



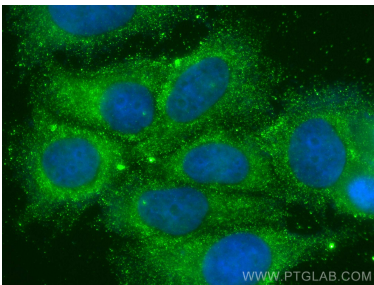
Immunohistochemical analysis of paraffin-embedded human placenta tissue slide using 68320-1-Ig (COL3A1 antibody) at dilution of 1:2000 (under 40x lens). Heat mediated antigen retrieval with Tris-EDTA buffer (pH 9.0).



Immunohistochemical analysis of paraffin-embedded human hepatocirrhosis tissue slide using 68320-1-Ig (COL3A1 antibody) at dilution of 1:1000 (under 10x lens). Heat mediated antigen retrieval with Tris-EDTA buffer (pH 9.0).



Immunohistochemical analysis of paraffin-embedded human hepatocirrhosis tissue slide using 68320-1-Ig (COL3A1 antibody) at dilution of 1:1000 (under 40x lens). Heat mediated antigen retrieval with Tris-EDTA buffer (pH 9.0).



Immunofluorescent analysis of (-20°C Methanol)  
fixed MCF-7 cells using COL3A1 antibody (68320-  
1-Ig, Clone: 3B1F3 ) at dilution of 1:400 and  
CoraLite®488-Conjugated AffiniPure Goat Anti-  
Mouse IgG(H+L) (SA00013-1).