

For Research Use Only

# PBLD Monoclonal antibody

Catalog Number: 68317-1-Ig **2 Publications**



## Basic Information

<b>Catalog Number:</b> 68317-1-Ig	<b>GenBank Accession Number:</b> BC009738	<b>Purification Method:</b> Protein G purification
<b>Concentration:</b> 1000 µg/ml	<b>GeneID (NCBI):</b> 64081	<b>CloneNo.:</b> 1G11D4
<b>Source:</b> Mouse	<b>UNIPROT ID:</b> P30039	<b>Recommended Dilutions:</b> WB 1:2000-1:10000 IF/ICC 1:200-1:800
<b>Isotype:</b> IgG1	<b>Full Name:</b> phenazine biosynthesis-like protein domain containing	
<b>Immunogen Catalog Number:</b> AG23827	<b>Observed MW:</b> 30 kDa	

## Applications

<b>Tested Applications:</b> WB, IF/ICC, ELISA	<b>Positive Controls:</b>
<b>Cited Applications:</b> WB	<b>WB :</b> pig liver tissue, pig kidney tissue
<b>Species Specificity:</b> Human, pig	<b>IF/ICC :</b> HEK-293 cells,
<b>Cited Species:</b> human, mouse	

## Background Information

PBLD, also termed as MAWBP, was first identified from a human liver cDNA library using a yeast two-hybrid technique by Iriyama et al. As the only representative of phenazine biosynthesis-like protein family, PBLD is widely expressed in human tissues, such as brain, heart, lung, liver, pancreas, kidney, and placenta. Its expression is elevated in several diseases processes, including insulin resistance, folate deficiency, and hypotension. PBLD has been proved to be involved in gastric carcinogenesis, PBLD expression was attenuated in gastric cancer (GC) tissues, and negatively regulated the growth and invasion in gastric cancer cell-lines by inhibiting TGF-β 1-induced EMT (Epithelial-Mesenchymal Transition).(PMID: 11355021, 17929853, 23687415, 26594798)

## Notable Publications

Author	Pubmed ID	Journal	Application
Peili Hou	39779683	Nat Commun	WB
Yonger Chen	39272040	Mol Cancer	WB

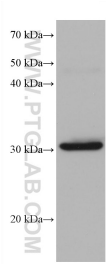
## Storage

**Storage:**  
Store at -20°C. Stable for one year after shipment.  
**Storage Buffer:**  
PBS with 0.02% sodium azide and 50% glycerol, pH7.3  
**Aliquoting is unnecessary for -20°C storage**

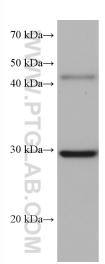
For technical support and original validation data for this product please contact:  
T: 4006900926 E: Proteintech-CN@ptglab.com W: ptgcn.com

This product is exclusively available under Proteintech Group brand and is not available to purchase from any other manufacturer.

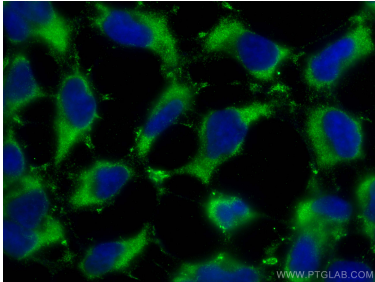
Selected Validation Data



pig liver tissue were subjected to SDS PAGE followed by western blot with 68317-1-Ig (PBLD antibody) at dilution of 1:5000 incubated at room temperature for 1.5 hours.



pig kidney tissue were subjected to SDS PAGE followed by western blot with 68317-1-Ig (PBLD antibody) at dilution of 1:5000 incubated at room temperature for 1.5 hours.



Immunofluorescent analysis of (-20°C Ethanol) fixed HEK-293 cells using PBLD antibody (68317-1-Ig, Clone: 1G11D4 ) at dilution of 1:400 and CoraLite®488-Conjugated Goat Anti-Mouse IgG(H+L).