

EXOSC10 Monoclonal antibody

Catalog Number: 68315-1-Ig

Basic Information

Catalog Number:

68315-1-Ig

Size:

1000 µg/ml

Source:

Mouse

Isotype:

IgG1

Immunogen Catalog Number:

AG28587

GenBank Accession Number:

BC039901

GeneID (NCBI):

5394

UNIPROT ID:

Q01780

Full Name:

exosome component 10

Calculated MW:

98 kDa

Observed MW:

98 kDa

Purification Method:

Protein G purification

CloneNo.:

1D6G9

Recommended Dilutions:

WB 1:5000-1:50000

IP 0.5-4.0 µg for 1.0-3.0 mg of total protein lysate

IF/ICC 1:500-1:2000

Applications

Tested Applications:

IF/ICC, IP, WB, ELISA

Species Specificity:

Human

Positive Controls:

WB : LNCaP cells, HeLa cells, HepG2 cells, Jurkat cells, K-562 cells, HSC-T6 cells

IP : HeLa cells,

IF/ICC : HeLa cells,

Background Information

About 50% of patients with polymyositis/scleroderma (PM-Scl) overlap syndrome are reported to have autoantibodies to a nuclear/nucleolar particle termed PM-Scl. Exosome component 10 (EXOSC10), also named autoantigen PM/Scl 2, is the 100 kDa antigen component of PM-Scl and is recognized by most sera of PM-Scl patients. EXOSC10 is strongly enriched in the nucleolus and a small amount has been found in cytoplasm supporting the existence of a nucleolar RNA exosome complex form. As a putative catalytic component of the RNA exosome complex which has 3'→5' exoribonuclease activity, EXOSC10 participates in a multitude of cellular RNA processing and degradation events.

Storage

Storage:

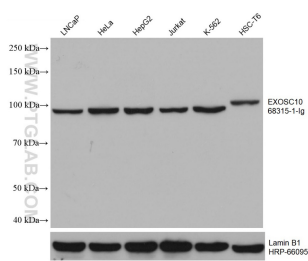
Store at -20°C. Stable for one year after shipment.

Storage Buffer:

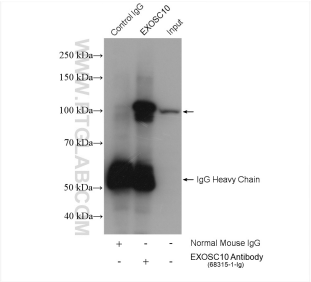
PBS with 0.02% sodium azide and 50% glycerol pH 7.3.

Aliquoting is unnecessary for -20°C storage

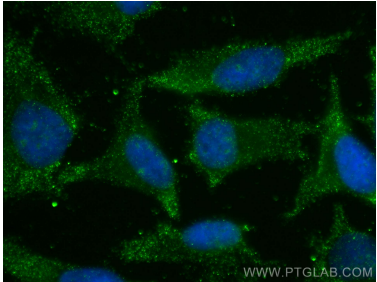
Selected Validation Data



Various lysates were subjected to SDS PAGE followed by western blot with 68315-1-Ig (EXOSC10 antibody) at dilution of 1:10000 incubated at room temperature for 1.5 hours. The membrane was stripped and reblotted with HRP-conjugated Lamin B1 Monoclonal antibody (HRP-66095) as loading control.



IP result of anti-EXOSC10 (IP: 68315-1-Ig, 4ug; Detection: 68315-1-Ig 1:1000) with HeLa cells lysate 1720 ug.



Immunofluorescent analysis of (-20°C Ethanol) fixed HeLa cells using EXOSC10 antibody (68315-1-Ig, Clone: 1D6G9) at dilution of 1:1000 and CoraLite®488-Conjugated AffiniPure Goat Anti-Mouse IgG(H+L).