

For Research Use Only

# ATP5F1 Monoclonal antibody, PBS Only



Catalog Number: 68304-1-PBS

## Basic Information

Catalog Number: 68304-1-PBS	GenBank Accession Number: BC005366	Purification Method: Protein G purification
Size: 1 mg/ml	GeneID (NCBI): 515	CloneNo.: 1A10G9
Source: Mouse	UNIPROT ID: P24539	
Isotype: IgG1	Full Name: ATP synthase, H <sup>+</sup> transporting, mitochondrial F <sub>0</sub> complex, subunit B1	
Immunogen Catalog Number: AG8571	Calculated MW: 256 aa, 29 kDa	
	Observed MW: 25-30 kDa	

## Applications

Tested Applications:  
WB, Indirect ELISA, IF

Species Specificity:  
Human, Mouse, Rat

## Background Information

ATP5F1 (ATP synthase subunit b) belongs to the eukaryotic ATPase B chain family. The ATP5F1 gene encodes subunit B of the mitochondrial ATP synthase F<sub>0</sub> unit, which contains 214-amino acid with a 42-amino acid import signal (PMID:1831354). Mitochondrial membrane ATP synthase (F<sub>1</sub>F<sub>0</sub> ATP synthase or Complex V) produces ATP from ADP in the presence of a proton gradient across the membrane which is generated by electron transport complexes of the respiratory chain.

## Storage

Storage:  
Store at -80°C.  
**The product is shipped with ice packs. Upon receipt, store it immediately at -80°C**

Storage Buffer:  
PBS Only

For technical support and original validation data for this product please contact:

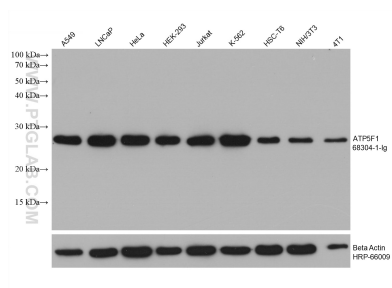
T: 4006900926

E: [Proteintech-CN@ptglab.com](mailto:Proteintech-CN@ptglab.com)

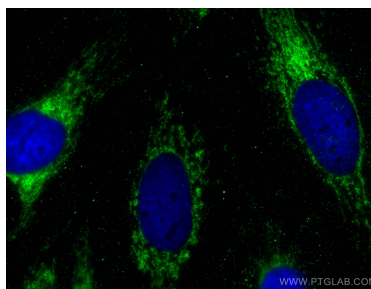
W: [ptgcn.com](http://ptgcn.com)

**This product is exclusively available under Proteintech Group brand and is not available to purchase from any other manufacturer.**

## Selected Validation Data



Various lysates were subjected to SDS PAGE followed by western blot with 68304-1-Ig (ATP5F1 antibody) at dilution of 1:20000 incubated at room temperature for 1.5 hours. The membrane was stripped and reblotted with HRP-conjugated Beta Actin Monoclonal antibody (HRP-66009) as loading control. This data was developed using the same antibody clone with 68304-1-PBS in a different storage buffer formulation.



Immunofluorescent analysis of (-20°C Ethanol) fixed HeLa cells using ATP5F1 antibody (68304-1-Ig, Clone: 1A10G9) at dilution of 1:400 and CoraLite®488-Conjugated AffiniPure Goat Anti-Mouse IgG(H+L). This data was developed using the same antibody clone with 68304-1-PBS in a different storage buffer formulation.