

ATP5F1 Monoclonal antibody

Catalog Number: 68304-1-Ig

Basic Information

Catalog Number: 68304-1-Ig	GenBank Accession Number: BC005366	Purification Method: Protein G purification
Size: 1000 µg/ml	GeneID (NCBI): 515	CloneNo.: 1A10G9
Source: Mouse	UNIPROT ID: P24539	Recommended Dilutions: WB 1:5000-1:50000 IF/ICC 1:200-1:800
Isotype: IgG1	Full Name: ATP synthase, H ⁺ transporting, mitochondrial F ₀ complex, subunit B1	
Immunogen Catalog Number: AG8571	Calculated MW: 256 aa, 29 kDa	
	Observed MW: 25-30 kDa	

Applications

Tested Applications: IF/ICC, WB, ELISA	Positive Controls:
Species Specificity: Human, Mouse, Rat	WB : A549 cells, LNCaP cells, HeLa cells, HEK-293 cells, Jurkat cells, K-562 cells, HSC-T6 cells, NIH/3T3 cells, 4T1 cells
	IF/ICC : HeLa cells,

Background Information

ATP5F1(ATP synthase subunit b) belongs to the eukaryotic ATPase B chain family. The ATP5F1 gene encodes subunit B of the mitochondrial ATP synthase F₀ unit, which contains 214-amino acid with a 42-amino acid import signal(PMID:1831354). Mitochondrial membrane ATP synthase(F₁F₀ ATP synthase or Complex V) produces ATP from ADP in the presence of a proton gradient across the membrane which is generated by electron transport complexes of the respiratory chain.

Storage

Storage:
Store at -20°C. Stable for one year after shipment.
Storage Buffer:
PBS with 0.02% sodium azide and 50% glycerol pH 7.3.
Aliquoting is unnecessary for -20°C storage

For technical support and original validation data for this product please contact:

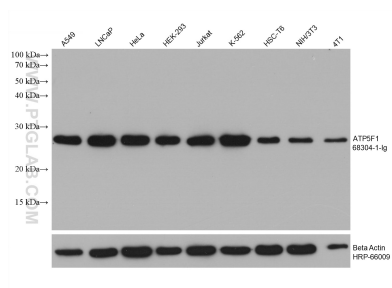
T: 4006900926

E: Proteintech-CN@ptglab.com

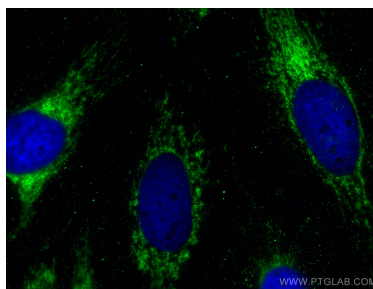
W: ptgcn.com

This product is exclusively available under Proteintech Group brand and is not available to purchase from any other manufacturer.

Selected Validation Data



Various lysates were subjected to SDS PAGE followed by western blot with 68304-1-Ig (ATP5F1 antibody) at dilution of 1:20000 incubated at room temperature for 1.5 hours. The membrane was stripped and reblotted with HRP-conjugated Beta Actin Monoclonal antibody (HRP-66009) as loading control.



Immunofluorescent analysis of (-20°C Ethanol) fixed HeLa cells using ATP5F1 antibody (68304-1-Ig, Clone: 1A10G9) at dilution of 1:400 and CoraLite®488-Conjugated AffiniPure Goat Anti-Mouse IgG(H+L).