

Cytokeratin 5/6 Monoclonal antibody

Catalog Number: 68295-1-Ig

Basic Information

Catalog Number:

68295-1-Ig

Size:

1000 µg/ml

Source:

Mouse

Isotype:

IgG1

Immunogen Catalog Number:

AG11288

GenBank Accession Number:

BC034535

GeneID (NCBI):

3854

UNIPROT ID:

P04259

Full Name:

keratin 6B

Calculated MW:

564 aa, 60 kDa

Observed MW:

60 kDa

Purification Method:

Protein G purification

CloneNo.:

1F9E1

Recommended Dilutions:

WB 1:5000-1:50000

IHC 1:1150-1:4600

IF-P 1:200-1:800

IF/ICC 1:400-1:1600

Applications

Tested Applications:

WB, IHC, IF/ICC, IF-P, ELISA

Species Specificity:

human, mouse, rat

Note-IHC: suggested antigen retrieval with TE buffer pH 9.0; (*) Alternatively, antigen retrieval may be performed with citrate buffer pH 6.0

Positive Controls:

WB : HaCaT cells, A431 cells, human saliva, rat skin tissue, mouse skin tissue

IHC : human cervical cancer tissue, human lung cancer tissue, human oesophagus cancer tissue

IF-P : human cervical cancer tissue,

IF/ICC : HeLa cells,

Background Information

Keratins are a large family of proteins that form the intermediate filament cytoskeleton of epithelial cells, which are classified into two major sequence types. Type I keratins are a group of acidic intermediate filament proteins, including K9-K23, and the hair keratins Ha1-Ha8. Type II keratins are the basic or neutral counterparts to the acidic type I keratins, including K1-K8, and the hair keratins, Hb1-Hb6. This antibody can react with Cytokeratin 5 and Cytokeratin 6.

Storage

Storage:

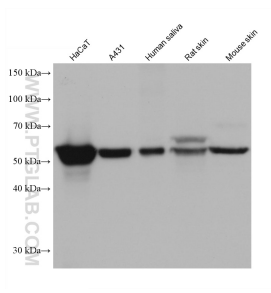
Store at -20°C. Stable for one year after shipment.

Storage Buffer:

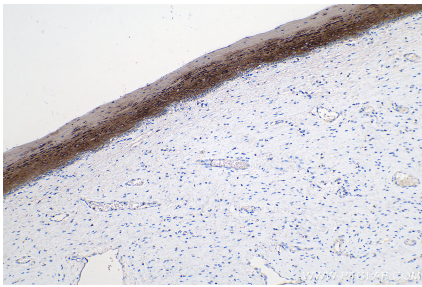
PBS with 0.02% sodium azide and 50% glycerol pH 7.3.

Aliquoting is unnecessary for -20°C storage

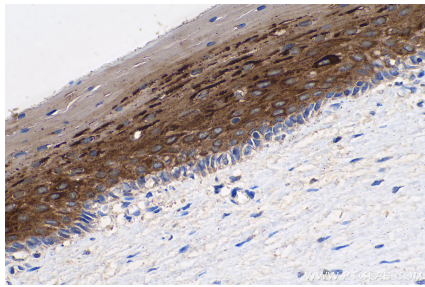
Selected Validation Data



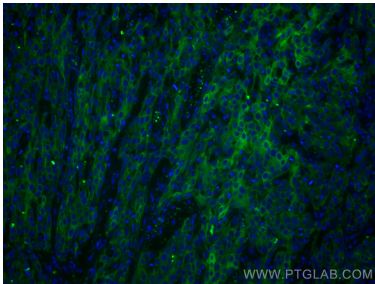
Various lysates were subjected to SDS PAGE followed by western blot with 68295-1-Ig (Cytokeratin 5/6 antibody) at dilution of 1:10000 incubated at room temperature for 1.5 hours.



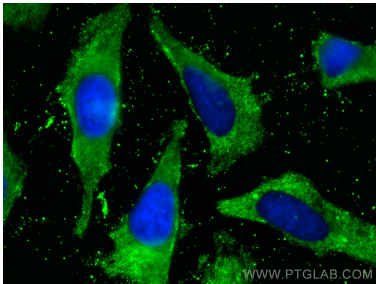
Immunohistochemical analysis of paraffin-embedded human cervical cancer tissue slide using 68295-1-Ig (Cytokeratin 5/6 antibody) at dilution of 1:2300 (under 10x lens). Heat mediated antigen retrieval with Tris-EDTA buffer (pH 9.0).



Immunohistochemical analysis of paraffin-embedded human cervical cancer tissue slide using 68295-1-Ig (Cytokeratin 5/6 antibody) at dilution of 1:2300 (under 40x lens). Heat mediated antigen retrieval with Tris-EDTA buffer (pH 9.0).



Immunofluorescent analysis of (4% PFA) fixed human cervical cancer tissue using Cytokeratin 5/6 antibody (68295-1-Ig, Clone: 1F9E1) at dilution of 1:400 and CoraLite®488-Conjugated AffiniPure Goat Anti-Mouse IgG(H+L).



Immunofluorescent analysis of (-20°C Methanol) fixed HeLa cells using Cytokeratin 5/6 antibody (68295-1-Ig, Clone: 1F9E1) at dilution of 1:800 and CoraLite®488-Conjugated AffiniPure Goat Anti-Mouse IgG(H+L).