

# SERCA3 Monoclonal antibody

Catalog Number: 68287-1-Ig

## Basic Information

Catalog Number:

68287-1-Ig

Size:

1000 µg/ml

Source:

Mouse

Isotype:

IgG1

Immunogen Catalog Number:

AG4527

GenBank Accession Number:

BC035729

GeneID (NCBI):

489

UNIPROT ID:

Q93084

Full Name:

ATPase, Ca<sup>++</sup> transporting, ubiquitous

Calculated MW:

1043 aa, 114 kDa

Observed MW:

97-110 kDa

Purification Method:

Protein G purification

CloneNo.:

1A2C2

Recommended Dilutions:

WB 1:5000-1:50000

IF/ICC 1:200-1:800

## Applications

Tested Applications:

WB, IF/ICC, ELISA

Species Specificity:

Human, mouse, rat

Positive Controls:

WB : HepG2 cells, mouse heart tissue, MOLT-4 cells, Jurkat cells, K-562 cells, HL-60 cells, rat heart tissue

IF/ICC : HT-29 cells,

## Background Information

The SERCA, which pumps cytosolic Ca<sup>2+</sup> into the ER, is an imperative maintainer of ER Ca<sup>2+</sup> homeostasis. The mammalian SERCA family is comprised of three tissue-specific members, SERCA1-3. SERCA3 is present in endothelial and epithelial cells of various tissues. SERCA3 helps regulate intracellular Ca<sup>2+</sup>, which is critical for maintaining normal INS secretion and is closely linked to metabolism, neuronal plasticity, gene transcription, cell growth, differentiation, apoptosis, protein folding and carcinogenesis. Several isoforms of SERCA3 exist due to the alternative splicing.

## Storage

Storage:

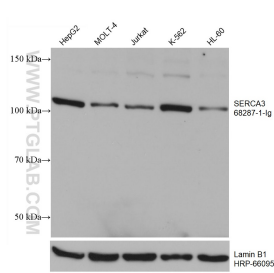
Store at -20°C. Stable for one year after shipment.

Storage Buffer:

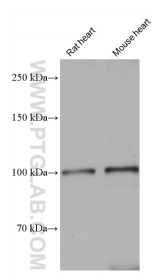
PBS with 0.02% sodium azide and 50% glycerol pH 7.3.

Aliquoting is unnecessary for -20°C storage

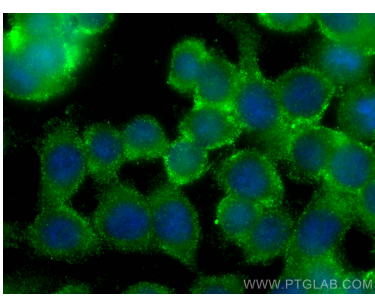
## Selected Validation Data



Various lysates were subjected to SDS PAGE followed by western blot with 68287-1-Ig (ATP2A3 antibody) at dilution of 1:10000 incubated at room temperature for 1.5 hours. The membrane was stripped and reblotted with HRP-conjugated Lamin B1 Monoclonal antibody (HRP-66095) as loading control.



Various lysates were subjected to SDS PAGE followed by western blot with 68287-1-Ig (ATP2A3 antibody) at dilution of 1:10000 incubated at room temperature for 1.5 hours.



Immunofluorescent analysis of (-20°C Ethanol) fixed HT-29 cells using SERCA3 antibody (68287-1-Ig, Clone: 1A2C2 ) at dilution of 1:400 and CoraLite®488-Conjugated AffiniPure Goat Anti-Mouse IgG(H+L).