

For Research Use Only

RABEP1 Monoclonal antibody, PBS Only



Catalog Number: 68285-1-PBS

Basic Information

Catalog Number: 68285-1-PBS	GenBank Accession Number: BC041700	Purification Method: Protein G purification
Size: 1 mg/ml	GeneID (NCBI): 9135	CloneNo.: 1E7E11
Source: Mouse	UNIPROT ID: Q15276	
Isotype: IgG1	Full Name: rabaptin, RAB GTPase binding effector protein 1	
Immunogen Catalog Number: AG6023	Calculated MW: 99 kDa	
	Observed MW: 100-105 kDa	

Applications

Tested Applications:
WB, Indirect ELISA, IF

Species Specificity:
Human, Mouse, Rat, Rabbit, Pig

Background Information

Rab GTPase-binding effector protein 1 is an enzyme that in humans is encoded by the RABEP1 gene. It belongs to rabaptin protein family. RABEP1 act as linker between gamma-adaptin, RAB4A and RAB5A. It is involved in endocytic membrane fusion and membrane trafficking of recycling endosomes. (PMID: 22841712)

Storage

Storage:
Store at -80°C.
The product is shipped with ice packs. Upon receipt, store it immediately at -80°C

Storage Buffer:
PBS Only

For technical support and original validation data for this product please contact:

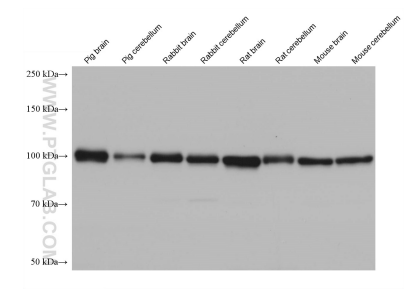
T: 4006900926

E: Proteintech-CN@ptglab.com

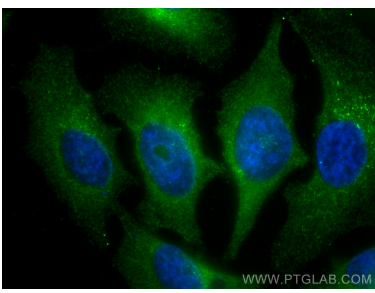
W: ptgcn.com

This product is exclusively available under Proteintech Group brand and is not available to purchase from any other manufacturer.

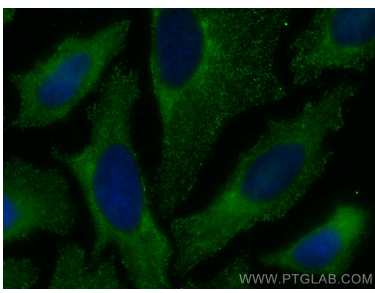
Selected Validation Data



Various lysates were subjected to SDS PAGE followed by western blot with 68285-1-Ig (RABEP1 antibody) at dilution of 1:20000 incubated at room temperature for 1.5 hours. This data was developed using the same antibody clone with 68285-1-PBS in a different storage buffer formulation.



Immunofluorescent analysis of (-20°C Methanol) fixed HeLa cells using RABEP1 antibody (68285-1-Ig, Clone: 1E7E11) at dilution of 1:400 and CoraLite®488-Conjugated AffiniPure Goat Anti-Mouse IgG(H+L). This data was developed using the same antibody clone with 68285-1-PBS in a different storage buffer formulation.



Immunofluorescent analysis of (-20°C Methanol) fixed HeLa cells using RABEP1 antibody (68285-1-Ig, Clone: 1E7E11) at dilution of 1:800 and CoraLite®488-Conjugated AffiniPure Goat Anti-Mouse IgG(H+L). This data was developed using the same antibody clone with 68285-1-PBS in a different storage buffer formulation.