

RABEP1 Monoclonal antibody

Catalog Number: 68285-1-Ig

Basic Information

Catalog Number:

68285-1-Ig

Size:

1000 µg/ml

Source:

Mouse

Isotype:

IgG1

Immunogen Catalog Number:

AG6023

GenBank Accession Number:

BC041700

GeneID (NCBI):

9135

UNIPROT ID:

Q15276

Full Name:

rabaptin, RAB GTPase binding effector protein 1

Calculated MW:

99 kDa

Observed MW:

100-105 kDa

Purification Method:

Protein G purification

CloneNo.:

1E7E11

Recommended Dilutions:

WB 1:5000-1:50000

IF/ICC 1:200-1:800

Applications

Tested Applications:

IF/ICC, WB, ELISA

Species Specificity:

Human, Mouse, Rat, Rabbit, Pig

Positive Controls:

WB : pig brain tissue, pig cerebellum tissue, rabbit brain tissue, rabbit cerebellum tissue, rat brain tissue, rat cerebellum tissue, mouse brain tissue, mouse cerebellum tissue

IF/ICC : HeLa cells,

Background Information

Rab GTPase-binding effector protein 1 is an enzyme that in humans is encoded by the RABEP1 gene. It belongs to rabaptin protein family. RABEP1 act as linker between gamma-adaptin, RAB4A and RAB5A. It is involved in endocytic membrane fusion and membrane trafficking of recycling endosomes. (PMID: 22841712)

Storage

Storage:

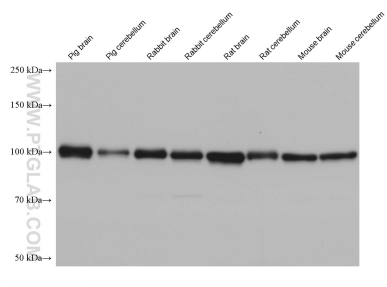
Store at -20°C. Stable for one year after shipment.

Storage Buffer:

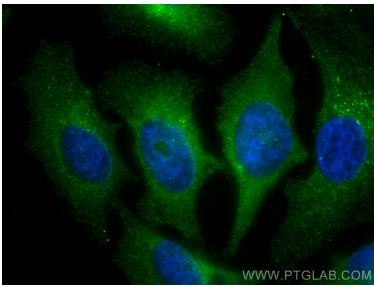
PBS with 0.02% sodium azide and 50% glycerol pH 7.3.

Aliquoting is unnecessary for -20°C storage

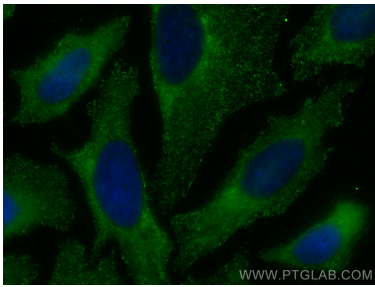
Selected Validation Data



Various lysates were subjected to SDS PAGE followed by western blot with 68285-1-Ig (RABEP1 antibody) at dilution of 1:20000 incubated at room temperature for 1.5 hours.



Immunofluorescent analysis of (-20°C Methanol) fixed HeLa cells using RABEP1 antibody (68285-1-Ig, Clone: 1E7E11) at dilution of 1:400 and CoraLite®488-Conjugated AffiniPure Goat Anti-Mouse IgG(H+L).



Immunofluorescent analysis of (-20°C Methanol) fixed HeLa cells using RABEP1 antibody (68285-1-Ig, Clone: 1E7E11) at dilution of 1:800 and CoraLite®488-Conjugated AffiniPure Goat Anti-Mouse IgG(H+L).