

For Research Use Only

# BDH2 Monoclonal antibody

Catalog Number: 68279-1-Ig

Featured Product



## Basic Information

Catalog Number:

68279-1-Ig

Size:

1000  $\mu$ g/ml

Source:

Mouse

Isotype:

IgG1

Immunogen Catalog Number:

AG26108

GenBank Accession Number:

BC095414

GeneID (NCBI):

56898

UNIPROT ID:

Q9BUT1

Full Name:

3-hydroxybutyrate dehydrogenase,  
type 2

Observed MW:

27 kDa

Purification Method:

Protein G purification

CloneNo.:

1B6H5

Recommended Dilutions:

WB 1:5000-1:50000

IF/ICC 1:200-1:800

## Applications

Tested Applications:

IF/ICC, WB, ELISA

Species Specificity:

Human

Positive Controls:

WB : BxPC-3 cells, HeLa cells, HEK-293 cells, HepG2  
cells, Jurkat cells

IF/ICC : HepG2 cells,

## Background Information

Cytosolic type 2-hydroxybutyrate dehydrogenase, BDH2, originally named DHRS6, plays a physiological role in the cytosolic utilization of ketone bodies, which can subsequently enter mitochondria and the tricarboxylic acid cycle (PMID: 16380372). Moreover, BDH2 catalyzes the production of 2, 3-DHBA during enterobactin biosynthesis and participates in 24p3 (LCN2)-mediated iron transport and apoptosis (PMID: 23150981). It has 3 isoforms with molecular weights of 27, 19, and 16 kDa.

## Storage

Storage:

Store at -20°C. Stable for one year after shipment.

Storage Buffer:

PBS with 0.02% sodium azide and 50% glycerol pH 7.3.

Aliquoting is unnecessary for -20°C storage

For technical support and original validation data for this product please contact:

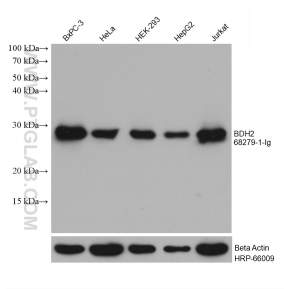
T: 4006900926

E: [Proteintech-CN@ptglab.com](mailto:Proteintech-CN@ptglab.com)

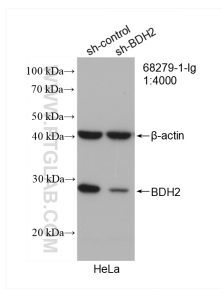
W: [ptgcn.com](http://ptgcn.com)

This product is exclusively available under Proteintech Group brand and is not available to purchase from any other manufacturer.

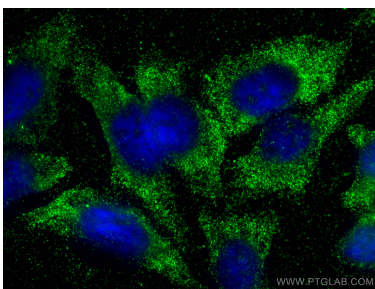
## Selected Validation Data



Various lysates were subjected to SDS PAGE followed by western blot with 68279-1-Ig (BDH2 antibody) at dilution of 1:10000 and incubated at room temperature for 1.5 hours. The membrane was stripped and reblotted with HRP-conjugated Beta Actin Monoclonal antibody (HRP-66009) as loading control.



WB result of BDH2 antibody (68279-1-Ig: 1:4000; incubated at room temperature for 1.5 hours) with sh-Control and sh-BDH2 transfected HeLa cells.



Immunofluorescent analysis of (-20°C Ethanol) fixed HepG2 cells using BDH2 antibody (68279-1-Ig, Clone: 1B6H5 ) at dilution of 1:400 and CoraLite®488-Conjugated AffiniPure Goat Anti-Mouse IgG(H+L).