

PDXDC1 Monoclonal antibody

Catalog Number: 68278-1-Ig

Basic Information

Catalog Number:

68278-1-Ig

Size:

1000 µg/ml

Source:

Mouse

Isotype:

IgG1

Immunogen Catalog Number:

AG15489

GenBank Accession Number:

BC033748

GeneID (NCBI):

23042

UNIPROT ID:

Q6P996

Full Name:

pyridoxal-dependent decarboxylase domain containing 1

Calculated MW:

788 aa, 87 kDa

Observed MW:

87 kDa

Purification Method:

Protein A purification

CloneNo.:

1E6E2

Recommended Dilutions:

WB 1:5000-1:50000

IF/ICC 1:400-1:1600

Applications

Tested Applications:

IF/ICC, WB, ELISA

Species Specificity:

Human, mouse, rat, pig

Positive Controls:

WB : LNCaP cells, NIH/3T3 cells, HEK-293 cells, Jurkat cells, K-562 cells, pig colon tissue, rat colon tissue

IF/ICC : MCF-7 cells,

Background Information

PDXDC1 (pyridoxal-dependent decarboxylase domain containing 1) is a putative enzyme that could metabolize catecholamine neurotransmitters (PMID:28485732). With prior evidence for involvement with glioblastoma from other previously reported experimental settings, and contains the lead single nucleotide polymorphism (rs3198697) from the linkage analysis of the chromosome 16 region (PMID:32644145). Moreover, PDXDC1 is involved in the catalysis of the nonhydrolytic addition or removal of a carboxyl group to or from a compound (PMID:29277971).

Storage

Storage:

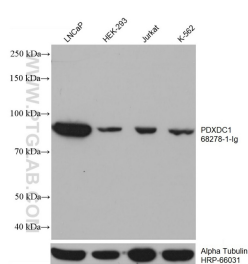
Store at -20°C. Stable for one year after shipment.

Storage Buffer:

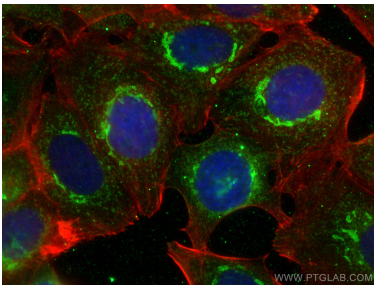
PBS with 0.02% sodium azide and 50% glycerol pH 7.3.

Aliquoting is unnecessary for -20°C storage

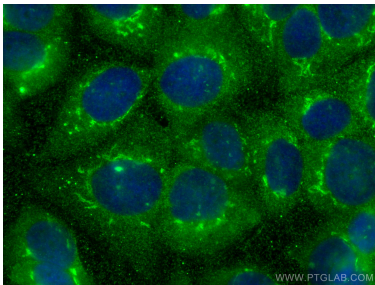
Selected Validation Data



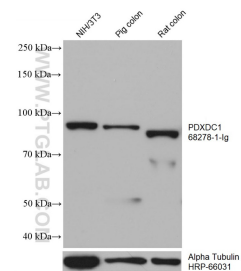
Various lysates were subjected to SDS PAGE followed by western blot with 68278-1-Ig (PDXDC1 antibody) at dilution of 1:20000 incubated at room temperature for 1.5 hours. The membrane was stripped and reblotted with HRP-conjugated Alpha Tubulin Monoclonal antibody (HRP-66031) as loading control.



Immunofluorescent analysis of (4% PFA) fixed MCF-7 cells using PDXDC1 antibody (68278-1-Ig, Clone: 1E6E2) at dilution of 1:800 and CoraLite®488-Conjugated AffiniPure Goat Anti-Mouse IgG(H+L), CL594-Phalloidin (red).



Immunofluorescent analysis of (-20°C Methanol) fixed MCF-7 cells using PDXDC1 antibody (68278-1-Ig, Clone: 1E6E2) at dilution of 1:800 and CoraLite®488-Conjugated AffiniPure Goat Anti-Mouse IgG(H+L).



NIH/3T3 cells were subjected to SDS PAGE followed by western blot with 68278-1-Ig (PDXDC1 antibody) at dilution of 1:20000 incubated at room temperature for 1.5 hours. The membrane was stripped and reblotted with HRP-conjugated Alpha Tubulin Monoclonal antibody (HRP-66031) as loading control.