

For Research Use Only

CRMP5 Monoclonal antibody

Catalog Number: 68272-1-Ig



Basic Information

Catalog Number: 68272-1-Ig	GenBank Accession Number: BC002874	Purification Method: Protein A purification
Size: 1000 µg/ml	GeneID (NCBI): 56896	CloneNo.: 3F2D8
Source: Mouse	UNIPROT ID: Q9BPU6	Recommended Dilutions: WB 1:5000-1:50000
Isotype: IgG2a	Full Name: dihydropyrimidinase-like 5	
Immunogen Catalog Number: AG0783	Calculated MW: 61 kDa	
	Observed MW: 61 kDa	

Applications

Tested Applications: WB, ELISA	Positive Controls: WB : pig brain tissue, rabbit cerebellum tissue, rat cerebellum tissue
Species Specificity: Human, Mouse, Rat, Pig, Rabbit	

Background Information

Collapsin response mediator proteins (CRMPs) are a family consisting of five homologous cytosolic phosphoproteins (CRMP1-5). All five CRMPs are abundantly expressed in the developing brain and the adult nervous system. CRMP5 is phylogenetically divergent from the other four CRMPs, sharing only 50% homology; this protein plays an important role in modulating filopodial dynamics and, in turn, restricting neuronal growth cone development.

Storage

Storage:
Store at -20°C. Stable for one year after shipment.
Storage Buffer:
PBS with 0.02% sodium azide and 50% glycerol pH 7.3.
Aliquoting is unnecessary for -20°C storage

For technical support and original validation data for this product please contact:

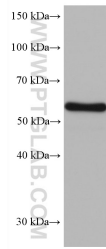
T: 4006900926

E: Proteintech-CN@ptglab.com

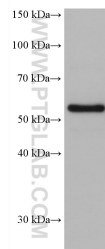
W: ptgcn.com

This product is exclusively available under Proteintech Group brand and is not available to purchase from any other manufacturer.

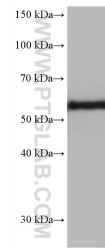
Selected Validation Data



pig brain tissue were subjected to SDS PAGE followed by western blot with 68272-1-Ig (DPYSL5 antibody) at dilution of 1:20000 incubated at room temperature for 1.5 hours.



rabbit cerebellum tissue were subjected to SDS PAGE followed by western blot with 68272-1-Ig (DPYSL5 antibody) at dilution of 1:20000 incubated at room temperature for 1.5 hours.



rat cerebellum tissue were subjected to SDS PAGE followed by western blot with 68272-1-Ig (CRMP5 antibody) at dilution of 1:20000 incubated at room temperature for 1.5 hours.