

MAP4 Monoclonal antibody

Catalog Number: 68271-1-Ig

Basic Information

Catalog Number:	68271-1-Ig	GenBank Accession Number:	BC012794	Purification Method:	Protein G purification
Size:	500 ug/ml	GeneID (NCBI):	4134	CloneNo.:	1C1A6
Source:	Mouse	UNIPROT ID:	P27816	Recommended Dilutions:	WB 1:5000-1:50000
Isotype:	IgG1	Full Name:	microtubule-associated protein 4	IHC 1:500-1:2000	IF/ICC 1:1000-1:4000
Immunogen Catalog Number:	AG1741	Calculated MW:	121 kDa		
		Observed MW:	210-240 kDa		

Applications

Tested Applications:
WB, IHC, IF/ICC, ELISA

Species Specificity:
human

Note-IHC: suggested antigen retrieval with TE buffer pH 9.0; (*) Alternatively, antigen retrieval may be performed with citrate buffer pH 6.0

Positive Controls:

WB : NCCIT cells, LNCaP cells, HeLa cells, HEK-293 cells, Jurkat cells, MOLT-4 cells

IHC : human lung cancer tissue,

IF/ICC : A431 cells,

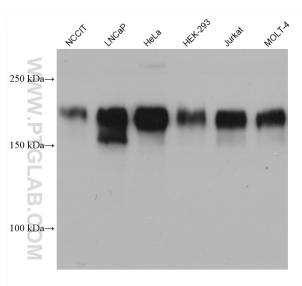
Background Information

MAP4 is a ubiquitously expressed microtubule-associated protein involved in the organization and stabilization of microtubules during various cellular activities. Recently it has been reported that expression of MAP4 was upregulated in esophageal squamous cell carcinoma (ESCC). MAP4 has been considered as an independent prognostic factor for ESCC. The predicted molecular weight of MAP4 is about 120 kDa, while higher molecular weight around 200-250 kDa is usually observed in WB test, which may be the result of glycosylation. (26876215, 8647865)

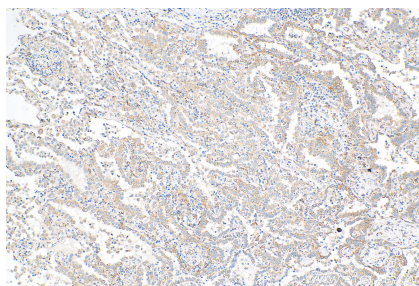
Storage

Storage:
Store at -20°C. Stable for one year after shipment.
Storage Buffer:
PBS with 0.02% sodium azide and 50% glycerol pH 7.3.
Aliquoting is unnecessary for -20°C storage

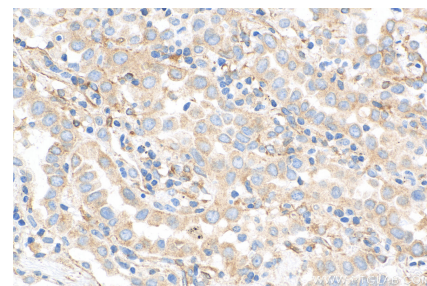
Selected Validation Data



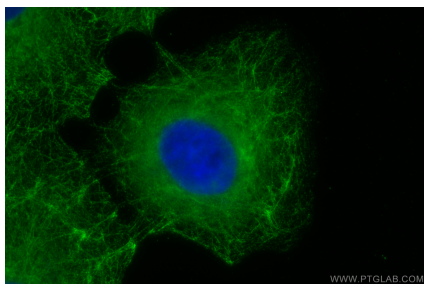
Various lysates were subjected to SDS PAGE followed by western blot with 68271-1-Ig (MAP4 antibody) at dilution of 1:20000 incubated at room temperature for 1.5 hours.



Immunohistochemical analysis of paraffin-embedded human lung cancer tissue slide using 68271-1-Ig (MAP4 antibody) at dilution of 1:1000 (under 10x lens). Heat mediated antigen retrieval with Tris-EDTA buffer (pH 9.0).



Immunohistochemical analysis of paraffin-embedded human lung cancer tissue slide using 68271-1-Ig (MAP4 antibody) at dilution of 1:1000 (under 40x lens). Heat mediated antigen retrieval with Tris-EDTA buffer (pH 9.0).



Immunofluorescent analysis of (-20°C Methanol) fixed A431 cells using MAP4 antibody (68271-1-Ig, Clone: 1C1A6) at dilution of 1:2000 and CoraLite®488-Conjugated AffiniPure Goat Anti-Mouse IgG(H+L).