

CARD11 Monoclonal antibody, PBS Only

Catalog Number: 68269-1-PBS

Basic Information

Catalog Number: 68269-1-PBS	GenBank Accession Number: BC111719	Purification Method: Protein G purification
Size: 1 mg/ml	GeneID (NCBI): 84433	CloneNo.: 3F5H6
Source: Mouse	UNIPROT ID: Q9BXL7	
Isotype: IgG1	Full Name: caspase recruitment domain family, member 11	
Immunogen Catalog Number: AG16468	Calculated MW: 1154 aa, 133 kDa	
	Observed MW: 140 kDa	

Applications

Tested Applications:
WB, Indirect ELISA, IF

Species Specificity:
Human

Background Information

CARD11 also named as BIMP3 or CARMA1, is a 1154 amino acid protein, which contains one PDZ domain, one guanylate kinase-like domain, and one CARD domain. CARD11 localizes in the cytoplasm and co-localized with DPP4 in membrane raft. CARD11 is detected in adult peripheral blood leukocytes, thymus, spleen and liver. CARD11 also is found in CARD11 promyelocytic leukemia HL-60 cells, chronic myelogenous leukemia K-562 cells, Burkitt's lymphoma Raji cells and colorectal adenocarcinoma SW480 cells. CARD11 is involved in the co-stimulatory signal essential for T-cell receptor mediated T-cell activation.

Storage

Storage:
Store at -80°C.
The product is shipped with ice packs. Upon receipt, store it immediately at -80°C

Storage Buffer:
PBS Only

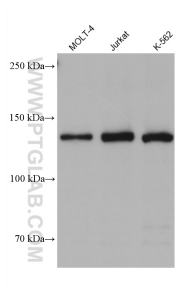
For technical support and original validation data for this product please contact:

T: 4006900926

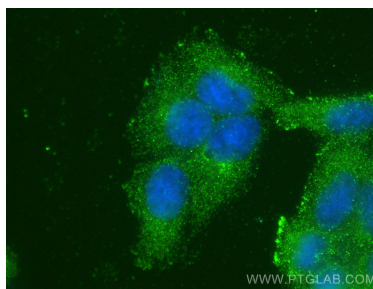
E: Proteintech-CN@ptglab.comW: ptgcn.com

This product is exclusively available under Proteintech Group brand and is not available to purchase from any other manufacturer.

Selected Validation Data



Various lysates were subjected to SDS PAGE followed by western blot with 68269-1-Ig (CARD11 antibody) at dilution of 1:5000 incubated at room temperature for 1.5 hours. This data was developed using the same antibody clone with 68269-1-PBS in a different storage buffer formulation.



Immunofluorescent analysis of (-20°C Ethanol) fixed L02 cells using CARD11 antibody (68269-1-Ig, Clone: 3F5H6) at dilution of 1:800 and CoraLite®488-Conjugated AffiniPure Goat Anti-Mouse IgG(H+L). This data was developed using the same antibody clone with 68269-1-PBS in a different storage buffer formulation.