

For Research Use Only

# PDCD2L Monoclonal antibody, PBS Only



Catalog Number: 68249-1-PBS

## Basic Information

Catalog Number: 68249-1-PBS	GenBank Accession Number: BC006146	Purification Method: Protein G purification
Size: 1mg/ml	GeneID (NCBI): 84306	CloneNo.: 2G12C4
Source: Mouse	UNIPROT ID: Q9BRP1	
Isotype: IgG1	Full Name: programmed cell death 2-like	
Immunogen Catalog Number: AG30807	Calculated MW: 358 aa, 39 kDa	
	Observed MW: 39 kDa	

## Applications

Tested Applications:  
WB, IF, Indirect ELISA

Species Specificity:  
Human

## Background Information

PDCD2L was aberrantly expressed in multiple types of human cancers, and associated with clinical stage and molecular subtype and PDCD2L could be served as a biomarker of CRC (PMID: 35216602).

## Storage

Storage:  
Store at -80°C.  
**The product is shipped with ice packs. Upon receipt, store it immediately at -80°C**

Storage Buffer:  
PBS Only

For technical support and original validation data for this product please contact:

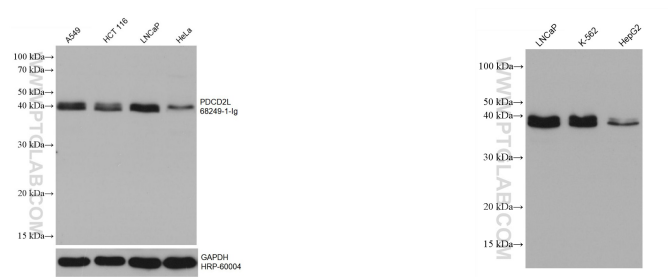
T: 4006900926

E: [Proteintech-CN@ptglab.com](mailto:Proteintech-CN@ptglab.com)

W: [ptgcn.com](http://ptgcn.com)

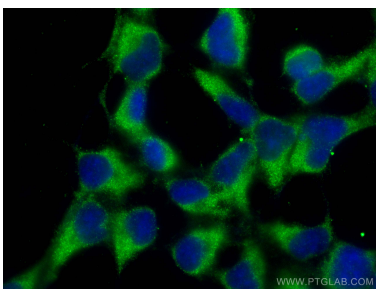
**This product is exclusively available under Proteintech Group brand and is not available to purchase from any other manufacturer.**

## Selected Validation Data



A549 cells were subjected to SDS PAGE followed by western blot with 68249-1-Ig (PDCD2L antibody) at dilution of 1:10000 incubated at room temperature for 1.5 hours. The membrane was stripped and reblotted with HRP-conjugated GAPDH Monoclonal antibody (HRP-60004) as loading control. This data was developed using the same antibody clone with 68249-1-PBS in a different storage buffer formulation.

Various lysates were subjected to SDS PAGE followed by western blot with 68249-1-Ig (PDCD2L antibody) at dilution of 1:5000 incubated at room temperature for 1.5 hours. This data was developed using the same antibody clone with 68249-1-PBS in a different storage buffer formulation.



Immunofluorescent analysis of (-20°C Ethanol) fixed HEK-293 cells using PDCD2L antibody (68249-1-Ig, Clone: 2G12C4) at dilution of 1:400 and CoraLite®488-Conjugated AffiniPure Goat Anti-Mouse IgG(H+L). This data was developed using the same antibody clone with 68249-1-PBS in a different storage buffer formulation.